



**SURINAME**

**Basis Indicatoren 2017-II**  
(Plus linkfactoren per Hoofdgroep van de CPI)

**SURINAME**  
**BASIC INDICATORS**

**Basic Indicators 2017-II**  
(Plus linkfactors per Division/Major Group of the CPI)

Suriname in Cijfers no 335-2017/09  
Algemeen Bureau voor de Statistiek (ABS)

December 2017  
Prijs/Price: SRD 40







|   | Pag./<br>Page |   |
|---|---------------|---|
| <b>Voorwoord</b>  | ii            | <b>Preface</b>  |
| <b>Inhoudsopgave</b>  |               | <b>Contents</b>   |
| <b>Inleiding</b>  | 5             | <b>Introduction</b>   |
| <b>Afkortingen</b>  | 7             | <b>Abbreviations</b>  |
| <b>1 Economische Indicatoren</b>  | 9             | <b>1 Economic Indicators</b>  |
| <b>Tabel 1.1a1:</b> Consumenten Prijs Indexcijfers & Inflatie, april 2015 t/m maart 2016: Paramaribo & Wanica, Nickerie, Saramacca & Coronie en Commewijne. Basisperiode april-juni 2009 (=100)               | 10            | <b>Table 1.1a:1</b> Consumer Price Index Numbers & Inflation, April 2015 up to Marh 2016: Paramaribo & Wanica, Nickerie, Saramacca & Coronie and Commewijne. Base Period April-June 2009 (=100)               |
| <b>Tabel 1.1a2:</b> Consumenten Prijs Indexcijfers & Inflatie, september 2016 t/m November 2017: Paramaribo & Wanica, Nickerie, Saramacca & Coronie, Commewijne and Para. Basisperiode april-juni 2016 (=100) | 10            | <b>Table 1.1a2:</b> Consumer Price Index Numbers & Inflation, September 2016 up to November 2017: Paramaribo & Wanica, Nickerie, Saramacca & Coronie, Commewijne and Para. Base Period April-June 2016 (=100) |
| <b>Grafiek 1a:</b> Maandinflatie (%), november 2015 – november 2017   | 12            | <b>Graph 1a:</b> Monthly changes (%), November 2015 – November 2017   |
| <b>Grafiek 1b:</b> 12 maandsinflatie % en gem/gem1, november 2015 - november 2017   | 12            | <b>Graph 1b:</b> 12monthly change % and Avg/Avg1, November 2015 – November 2017   |
| <b>Tabel 1.1b1.</b> Gemiddelde maandelijkse Brandstofprijzen (in SRD) per brandstofsoort, november 2014 t/m november 2017   | 13            | <b>Table 1.1b1</b> Average Monthly Fuel prices (in SRD) by Type of Fuel, November 2014 up to November 2017.   |
| <b>Tabel 1.1b2.</b> Jaarlijkse brandstof prijs indices (2007=100) per brandstofsoort, 2007 t/m 2016   | 14            | <b>Table 1.1b2.</b> Annual Fuel Price Indices (2007=100) by Type of Fuel, 2007 t/m 2016   |
| <b>Grafiek 2:</b> Jaarlijkse brandstof prijs indices (2007=100) per brandstofsoort, 2007 t/m 2016   | 14            | <b>Graph 2:</b> Annual Fuel Price Indices (2007=100) by Type of Fuel, 2007 t/m 2016   |
| <b>Grafiek 3a:</b> Jaarlijkse brandstof prijs indices (2007=100) per brandstofsoort in Suriname en wereldmarktprijsindex van ruwe olie, 2007-2016   | 15            | <b>Graph3a:</b> Annual Fuel Price Indices (2007=100) by Type of Fuel in Suriname and World Market Price Index of Crude Oil, 2007- 2016  |
| <b>Grafiek 3b:</b> Maandelijks brandstof prijs indices (2007=100) per brandstofsoort in Suriname en wereldmarktprijsindex van ruwe olie, november 2014 t/m november 2017                                      | 15            | <b>Graph 3b:</b> Monthly Fuel Price Indices (2007=100) by Type of Fuel in Suriname and World Market Price Index, November 2007- November 2017   |
| <b>Tabel 1.2</b> Exporten van Suriname, in US\$, 1 <sup>e</sup> kwartaal 2017.(incl. weder-export)  | 17            | <b>Table 1.2</b> Exports of Suriname, in US\$, 1 <sup>st</sup> Quarter 2017.(incl. re-export)   |
| <b>Tabel 1.3</b> Exporten van Suriname, in US\$, 2 <sup>e</sup> kwartaal 2017.(incl. weder-export)  | 18            | <b>Table 1.3</b> Exports of Suriname, in US\$, 2 <sup>nd</sup> Quarter 2017.(incl. re-export)   |
| <b>Tabel 1.4</b> Exporten van Suriname, in US\$, 3 <sup>e</sup> kwartaal 2017.(incl. weder-export)  | 19            | <b>Table 1.4</b> Exports of Suriname, in US\$, 3 <sup>rd</sup> Quarter 2017.(incl. re-export)   |
| <b>Tabel 1.5</b> Importen van Suriname, in US\$, 1 <sup>e</sup> kwartaal 2017.(incl. weder-export)  | 20            | <b>Table 1.5</b> Imports of Suriname, in US\$, 1 <sup>st</sup> Quarter 2017.(incl. re-export)   |

|  |           |   |
|--|-----------|---|
| <b>Tabel 1.6</b> Importen van Suriname, in US\$, 2 <sup>e</sup> kwartaal 2017.(incl. weder-export)                   | <b>21</b> | <b>Table 1.6</b> Imports of Suriname, in US\$, 2 <sup>nd</sup> Quarter 2017.(incl. re-export)                             |
| <b>Tabel 1.7</b> Importen van Suriname, in US\$, 3 <sup>e</sup> kwartaal 2017.(incl. weder-export)                   | <b>22</b> | <b>Table 1.7</b> Imports of Suriname, in US\$, 3 <sup>rd</sup> Quarter 2017.(incl. re-export)                             |
| <b>Tabel 1.8</b> Handelsbalans van Suriname, in US\$, 1 <sup>e</sup> – 3 <sup>e</sup> kwartaal 2017.                 | <b>23</b> | <b>Table 1.8</b> Tradebalance of Suriname, in US\$, 1 <sup>st</sup> – 1 <sup>st</sup> Quarter 2017.                       |
| <b>Tabel 1.9:</b> Totale importen,exporten en handelsbalans naar handelsblok 1 <sup>e</sup> kwartaal 2017            | <b>23</b> | <b>Table 1.9:</b> Total imports, exports and tradeblance by trade-union, 1 <sup>st</sup> Quarter 2017                     |
| <b>Tabel 1.10:</b> Totale importen,exporten en handelsbalans naar handelsblok 2 <sup>e</sup> kwartaal 2017.          | <b>23</b> | <b>Table 1.10:</b> Total imports, exports and tradeblance by trade-union, 2 <sup>nd</sup> Quarter 2017.                   |
| <b>Tabel 1.11:</b> Totale importen,exporten en handelsbalans naar handelsblok 3 <sup>e</sup> kwartaal 2017.          | <b>24</b> | <b>Table 1.11:</b> Total imports, exports and tradeblance by trade-union, 3 <sup>rd</sup> Quarter 2017                    |
| <b>Grafiek 4 :</b> Totale Importen en Totale Exporten in miljoenen US\$ naar handelsblok, 2016 .                     | <b>24</b> | <b>Graph 4:</b> Total Imports and Total Exports in millions US\$ by Trade Union, 2016.                                    |
| <b>II Financiële Indicatoren</b>   | <b>25</b> | <b>II Financial Indicators</b>  |
| <b>Tabel 2.1.</b> Bruto uitbetaalde salarissen van landsdienaren per maand, 2 <sup>e</sup> kwartaal 2017.            | <b>26</b> | <b>Table 2.1</b> Gross Paid Salaries of Civil Servants, per month, 2 <sup>rd</sup> Quarter 2017.                          |
| <b>Tabel 2.2</b> Bruto uitbetaalde salarissen van landsdienaren per maand, 3 <sup>e</sup> kwartaal 2017.             | <b>29</b> | <b>Table 2.2</b> Gross Paid Salaries of Civil Servants per month, 3 <sup>rd</sup> Quarter 2017.                           |
| <b>Tabel 2.3</b> Bruto uitbetaalde salarissen van landsdienaren per maand, 4 <sup>e</sup> kwartaal 2017.             | <b>32</b> | <b>Table 2.3</b> Gross Paid Salaries of Civil Servants per month, 4 <sup>th</sup> Quarter 2017.                           |
| <b>Grafiek 5a:</b> Lorenzcurve juli 2017 van de bruto uitbetaalde salarissen van landsdienaren                       | <b>34</b> | <b>Graph 5a:</b> Lorenz Curve July 2017 of the gross paid Salaries of civil servants                                      |
| <b>Grafiek 5b:</b> Lorenzcurve juli 2017 van de bruto uibetaalde salarissen van landsdienaren naar geslacht          | <b>34</b> | <b>Graph 5b:</b> Lorenz Curve July 2017 of the gross paid Salaries of civil servants by sex                               |
| <b>III Monetaire Indicatoren</b>   | <b>35</b> | <b>III Monetary Indicators</b>  |
| <b>Tabel 3.1</b> Officiële gemiddelde wisselkoers van de US\$, januari t/m november 2017.                            | <b>36</b> | <b>Table 3.1</b> Average Official Exchange Rate of the US\$, January up to November 2017.                                 |
| <b>Tabel 3.2</b> Officiële gemiddelde wisselkoers van de Euro, januari t/m november 2017.                            | <b>36</b> | <b>Table 3.2</b> Average Official Exchange Rate of the Euro, January up to November 2017.                                 |
| <b>Grafiek 6:</b> Verloop van de Officiële gemiddelde wisselkoers van de US\$ en de Euro, januari t/m november 2017. | <b>36</b> | <b>Graph 6 :</b> Development of the Average Official exchange rate of the US\$ and the Euro, January up to November 2017. |
| <b>Tabel 3.3</b> Gemiddelde Parallelmarkt wisselkoers van de US\$, januari t/m november 2017.                        | <b>37</b> | <b>Table 3.3</b> Average Parallel market Exchange Rate of the US\$, January up to November 2017.                          |
| <b>Tabel 3.4</b> Gemiddelde Parallelmarkt wisselkoers van de Euro, januari t/m november 2017.                        | <b>37</b> | <b>Table 3.4</b> Average Parallel market Exchange Rate of the Euro, January up to November 2017.                          |
| <b>Grafiek 7:</b> Verloop van de gemiddelde Parallelmarkt wisselkoers van de Euro, januari t/m november 2017.        | <b>37</b> | <b>Graph 7 :</b> Development of the Average Parallel market exchange rate of the Euro, January up to November 2017.       |

|  |   |   |
|--|---|---|
| <p><b>IV Sociale Indicatoren</b></p> <p><b>Tabel 4.1a:</b> Rechthebbenden van Algemene Oudedags Voorziening naar district, geslacht en uitgekeerd bedrag per maand in het 1<sup>e</sup> kwartaal 2017.</p> <p><b>Tabel 4.1b:</b> Rechthebbenden van Algemene Oudedags Voorziening naar district, geslacht en uitgekeerd bedrag per maand in het 2<sup>e</sup> kwartaal 2017.</p> <p><b>Tabel 4.1c:</b> Rechthebbenden van Algemene Oudedags Voorziening naar district, geslacht en uitgekeerd bedrag per maand in het 3<sup>e</sup> kwartaal 2017.</p> <p><b>Tabel 4.2a</b> Uitgekeerd bedrag per district en het aantal rechthebbende mannen en vrouwen per district, 3<sup>e</sup> kwartaal 2016</p> <p><b>Tabel 4.2b</b> Uitgekeerd bedrag per district en het aantal rechthebbende mannen en vrouwen per district, 4<sup>e</sup> kwartaal 2016.</p> <p><b>Tabel 4.2c</b> Uitgekeerd bedrag per district en het aantal rechthebbende mannen en vrouwen per district, 3<sup>e</sup> kwartaal 2016.</p> <p><b>Tabel 4.2d</b> Uitgekeerd bedrag per district en het aantal rechthebbende mannen en vrouwen per district, 4<sup>e</sup> kwartaal 2016</p> | <p><b>39</b></p> <p><b>40</b></p> <p><b>41</b></p> <p><b>42</b></p> <p><b>43</b></p> <p><b>44</b></p> <p><b>45</b></p> <p><b>46</b></p> | <p><b>IV Social Indicators</b></p> <p><b>Table 4.1a:</b> Claimants of General Old Age Security by District, Sex and Amount Paid per month in the 1<sup>st</sup> Quarter 2017.</p> <p><b>Table 4.1b:</b> Claimants of General Old Age Security by District, Sex and Amount Paid per month in the 2<sup>nd</sup> Quarter 2017.</p> <p><b>Table 4.1c:</b> Claimants of General Old Age Security by District, Sex and Amount Paid per month in the 3<sup>rd</sup> Quarter 2017.</p> <p><b>Table 4.2a:</b> Amount Paid by district and total claimant men and women by district, 3<sup>rd</sup> Quarter 2016.</p> <p><b>Table 4.2b:</b> Amount Paid by district and total claimant men and women by district, 4<sup>th</sup> Quarter 2016.</p> <p><b>Table 4.2c:</b> Amount Paid by district and total claimant men and women by district, 3<sup>rd</sup> Quarter 2016.</p> <p><b>Table 4.2d:</b> Amount Paid by district and total claimant men and women by district, 4<sup>th</sup> Quarter 2016.</p> |
|--|---|---|





| <b>Inleiding</b>  | <b>Introduction</b>   |
|---|---|
| <p>De publicatie "Suriname Basis Indicatoren" bevat sociale, economische, financiële en monetaire indicatoren, waarbij maand- of kwartaalcijfers zijn opgenomen.</p>  | <p><i>The publication "Suriname Basic Indicators" includes social, economic, financial and monetary indicators whereby monthly or quarterly figures are included.</i></p>   |
| <p>Het grootste deel van de economische indicatoren is afkomstig van het Algemeen Bureau voor de Statistiek.</p>  | <p><i>Most of the economic indicators are from the General Bureau of Statistics.</i></p>  |
| <p>Het Consumenten Prijs Indexcijfer (CPI)<sup>1</sup> is t/m juni 2016 samengesteld op basis van het goederen- en dienstenpakket voortgevloeid uit het in 2007/2008 gehouden Huishoud Budgetonderzoek. Vanaf april 2016 wordt het CPI samengesteld op basis van de resultaten van het Huishoud Budgetonderzoek 2013/2014.</p>  | <p><i>Up to June 2016 the Consumer Price Index (CPI)<sup>1</sup> is compiled on the basis of the basic basket of goods and services emanating from the Household Budget Survey 2007/2008. As of April 2016 it is compiled on the basis of the results of the Household Budget Survey 2013/2014</i></p>  |
| <p>De data met betrekking tot de bruto uitbetaalde salarissen krijgt het ABS van het Centraal Bureau Mechanische Administratie (Cebuma). Het aantal landsdienaren (ook naar geslacht horende bij een bepaalde salarisklasse en het totaal bedrag van dat aantal zijn opgenomen. De gepresenteerde data is exclusief ziekenhuizen, overheidsstichtingen en andere parastatalen.</p>  | <p><i>The ABS receives the data of gross paid salaries from the Central Bureau for Electronic Administration (Cebuma). The number of civil servants(also by sex) pertaining to a certain salary class and the total amount are included. The presented data is exclusive Hospitals, Government Foundations and other Parastatels.</i></p>   |
| <p>De data betreffende 'Financiële Bijstand' en 'Algemene Oudedags Voorziening' zijn afkomstig van het Ministerie van Sociale Zaken en Volkshuisvesting (SOZAVO).</p>   | <p><i>The data concerning , 'Financial Support' and 'General Old Age Security' is obtained from the Ministry of Social Affairs and Housing (SOZAVO).</i></p>  |
| <p>Personen die in aanmerking komen voor 'Algemene Oudedags Voorziening' (AOV) zijn personen die de leeftijd van 60 jaar bereikt hebben, de Surinaamse nationaliteit bezitten, binnen Suriname hun woonplaats hebben en daartoe een aanvraag hebben gedaan dan wel zich hebben geregistreerd. De uitkering was per januari 2008, SRD 275,- per maand. De uitkering was in december 2010 en januari 2011 SRD 350,- per maand. In januari 2012 was er</p> | <p><i>Persons who claim Old Age Pension (OAP) are Surinamese citizens living in Suriname, who have reached the age of 60 and who have applied and/or have been registered. As of January 2008, the payment was SRD 275.00 a month. In December 2010 and January 2011 the payment was SRD 350.00 a month. In January 2012 there has been approval for a raise of the O.A.P from SRD 425 to SRD 525. The implementation was as of March 2012.</i></p> |

<sup>1</sup> Wie meer wil weten over Suriname's CPI die leze: Consumenten Prijsindexcijfers en Inflatie in Suriname vanaf 1954 (een verantwoording) Suriname in cijfers: no. 200-2002/04 <sup>1</sup> Those interested in knowing more about Surinames's CPI are referred to: Consumer Price Indexes and Inflation in Suriname since 1954 (an account) Publication number: 200-2002/04

|  |   |
|--|---|
| <p>goedkeuring voor de verhoging van A.O.V. van SRD 425 naar SRD 525. De uitvoering daarvan was ingaande maart 2012.</p> <p>Personen die in aanmerking komen voor financiële bijstand zijn personen die horen tot de groep onvermogenen en personen met een 'beperking'.</p> <p>Vanaf januari 2013 wordt de data gepresenteerd waarbij een onderscheid wordt gemaakt tussen personen die in aanmerking komen voor financiële bijstand en personen met een beperking die in aanmerking komen voor een uitkering (UPH)</p> | <p><i>Persons who claim financial support are those who are categorized as indigents and those with a disability.</i></p> <p><i>As of January 2013 there is a distinction in the presented data, between people in general receiving financial support and those with a disability receiving financial support (UPH).</i></p> |
|--|---|

## **Afkortingen**

ABS = Algemeen Bureau voor de Statistiek

RH = Rechthebbenden

SRD = Surinaamse Dollar

US\$ = Amerikaanse Dollar

Onv = Onvermogenden

Minv = Minvermogenden

Min.v. SoZaVo = Ministerie van Sociale  
Zaken en Volkshuisvesting

Dienst AUSV = Dienst Administratie  
Uitbetaling Sociale  
Voorzieningen

M = man

V = vrouw

NB = niet beschikbaar

## **Abbreviations**

GBS = General Bureau of Statistics

CI = Claimants

SRD = Surinamese Dollar

US\$ = American Dollars

Ind = Indigents

Ins = Insolvents

Min.SoZaVo = Ministry Of Social Affairs  
and Housing

Dept AUSV = Administration Department  
for the Payment of Social  
Benefits

M = Male

F = Female

NA = Not Available



# I ECONOMISCHE INDICATOREN/



## ECONOMIC INDICATORS

# I Economische indicatoren/ Economic Indicators

## CPI

**Tabel 1.1a1: Consumenten Prijs Indexcijfer & Inflatie, april 2015 tot en met maart 2016:**  
**Paramaribo& Wanica, Nickerie, Saramacca & Coronie en Commewijne, Basisperiode April – Juni 2009 (=100)**

*Table 1.1a1: Consumer Price Index Number & Inflation, April 2015 up to March 2016 :  
 Paramaribo& Wanica, Nickerie, Saramacca & Coronie en Commewijne Base Period April –June 2009 (=100)*

| Period(e)   | Hoofdgroepen / Major Groups |       |       |       |       |       |       |       |       |       |       |              | Total | Inflatie /<br>(% changes) # |
|-------------|-----------------------------|-------|-------|-------|-------|-------|-------|-------|-------|-------|-------|--------------|-------|-----------------------------|
|             | 1                           | 2     | 3     | 4     | 5     | 6     | 7     | 8     | 9/10  | 11    | 12    | I(t, t-1)    |       |                             |
| Apr/Apr'15  | 151.5                       | 162.4 | 121.5 | 135.6 | 132.7 | 131.6 | 148.5 | 124.4 | 149.9 | 139.8 | 132.3 | <b>143.4</b> | 0.9   |                             |
| Mei/May     | 153.7                       | 162.4 | 123.1 | 135.7 | 133.1 | 131.6 | 155.1 | 124.7 | 151.1 | 141.1 | 132.4 | <b>145.2</b> | 0.5   |                             |
| Juni/June   | 159.9                       | 162.7 | 123.1 | 135.7 | 133.2 | 131.6 | 157.3 | 124.7 | 152.1 | 141.4 | 132.6 | <b>148.0</b> | 2.0   |                             |
| Juli/July   | 161.7                       | 162.8 | 124.2 | 135.7 | 133.8 | 131.6 | 157.8 | 124.9 | 153.1 | 141.4 | 132.8 | <b>149.0</b> | 0.6   |                             |
| Aug/ Aug    | 162.7                       | 164.1 | 124.7 | 135.7 | 134.4 | 131.7 | 150.9 | 124.9 | 153.9 | 141.8 | 133.1 | <b>148.7</b> | -0.2  |                             |
| Sep/Sep     | 160.7                       | 164.5 | 125.6 | 135.7 | 134.6 | 131.7 | 155.7 | 125.0 | 154.3 | 141.9 | 133.1 | <b>148.6</b> | -0.1  |                             |
| Okt/Oct     | 161.5                       | 164.6 | 128.8 | 135.8 | 135.0 | 132.1 | 153.5 | 125.6 | 156.6 | 142.2 | 133.6 | <b>148.9</b> | 0.2   |                             |
| Nov/Nov     | 165.8                       | 164.9 | 134.1 | 278.4 | 136.7 | 132.1 | 157.2 | 129.1 | 159.4 | 145.4 | 135.9 | <b>172.1</b> | 15.2  |                             |
| Dec /Dec    | 165.6                       | 193.3 | 149.1 | 279.4 | 145.2 | 132.2 | 173.5 | 149.4 | 175.0 | 156.3 | 140.7 | <b>178.0</b> | 3.3   |                             |
| Jan/ Jan'16 | 173.3                       | 196.0 | 157.3 | 280.3 | 151.5 | 156.6 | 174.3 | 150.3 | 187.3 | 158.7 | 146.1 | <b>183.8</b> | 3.2   |                             |
| Feb / Feb   | 179.6                       | 201.5 | 161.7 | 281.0 | 156.9 | 157.6 | 171.5 | 150.9 | 196.0 | 161.5 | 165.6 | <b>189.2</b> | 2.2   |                             |
| Mrt / Mrch  | 184.3                       | 215.0 | 168.3 | 295.9 | 160.9 | 160.5 | 174.3 | 161.5 | 206.3 | 164.9 | 170.3 | <b>195.8</b> | 3.5   |                             |

**Tabel 1.1a2: Consumenten Prijs Indexcijfer & Inflatie, september 2016 tot en met november 2017:**  
**Paramaribo& Wanica, Nickerie, Saramacca & Coronie, Commewijne en Para, Basisperiode April – Juni 2016 (=100)**

*Table 1.1a2: Consumer Price Index Number & Inflation, September 2016 up to November 2017 :  
 Paramaribo& Wanica, Nickerie, Saramacca & Coronie, Commewijne afnd Para, Base Period April –June 2016 (=100)*

| Period(e)  | Hoofdgroepen / Major Groups |       |       |       |       |       |       |       |       |       |       |              | Total | Inflatie /<br>(% changes) # |
|------------|-----------------------------|-------|-------|-------|-------|-------|-------|-------|-------|-------|-------|--------------|-------|-----------------------------|
|            | 1                           | 2     | 3     | 4     | 5     | 6     | 7     | 8     | 9/10  | 11    | 12    | I(t, t-1)    |       |                             |
| Sep/Sep'16 | 124.8                       | 145.2 | 112.8 | 103.6 | 121.5 | 115.0 | 110.9 | 117.6 | 117.6 | 119.3 | 113.1 | <b>115.8</b> | 5.2   |                             |
| Okt /Oct   | 128.3                       | 151.3 | 113.1 | 104.0 | 124.7 | 113.3 | 110.7 | 117.1 | 119.3 | 121.2 | 116.5 | <b>117.5</b> | 1.5   |                             |
| Nov/Nov    | 128.4                       | 150.1 | 112.8 | 109.9 | 125.4 | 113.3 | 114.0 | 116.7 | 117.7 | 121.3 | 116.3 | <b>119.2</b> | 1.4   |                             |
| Dec /Dec   | 129.3                       | 149.6 | 113.5 | 109.9 | 126.2 | 113.2 | 112.5 | 116.8 | 117.8 | 121.8 | 116.5 | <b>119.4</b> | 0.2   |                             |
| Jan/Jan'17 | 129.9                       | 149.6 | 114.0 | 109.9 | 127.7 | 113.3 | 115.4 | 117.0 | 119.7 | 122.0 | 118.2 | <b>120.3</b> | 0.7   |                             |
| Feb / Feb  | 129.7                       | 149.7 | 114.1 | 109.9 | 128.8 | 113.6 | 116.5 | 117.3 | 121.1 | 122.6 | 123.5 | <b>121.0</b> | 0.6   |                             |
| Mrt/Mrch   | 130.3                       | 150.0 | 115.0 | 110.0 | 129.4 | 114.0 | 118.2 | 117.3 | 123.6 | 122.7 | 130.0 | <b>122.2</b> | 1.0   |                             |
| Apr/Apr    | 130.7                       | 150.1 | 115.1 | 110.0 | 130.6 | 114.2 | 123.6 | 117.3 | 126.2 | 123.8 | 131.7 | <b>123.4</b> | 0.9   |                             |
| Mei/May    | 131.6                       | 150.2 | 115.4 | 110.2 | 130.9 | 114.5 | 124.5 | 117.3 | 127.9 | 125.1 | 132.7 | <b>124.0</b> | 0.5   |                             |
| Juni/June  | 135.7                       | 150.2 | 115.4 | 110.2 | 131.0 | 114.9 | 125.2 | 117.3 | 128.5 | 128.6 | 132.9 | <b>125.5</b> | 1.2   |                             |
| Juli/July  | 139.6                       | 150.6 | 115.8 | 110.4 | 131.2 | 115.1 | 125.7 | 125.6 | 128.8 | 130.3 | 133.1 | <b>127.2</b> | 1.4   |                             |
| Aug/Aug    | 140.6                       | 150.6 | 116.1 | 110.6 | 131.8 | 116.6 | 127.2 | 125.7 | 129.7 | 131.0 | 133.4 | <b>127.9</b> | 0.6   |                             |
| Sep/Sep    | 144.0                       | 150.8 | 117.2 | 110.6 | 131.9 | 116.5 | 128.5 | 125.7 | 129.8 | 132.3 | 134.2 | <b>129.3</b> | 1.1   |                             |
| Okt /Oct   | 145.1                       | 151.5 | 117.2 | 110.8 | 132.2 | 116.5 | 131.2 | 125.8 | 131.1 | 132.5 | 134.9 | <b>130.2</b> | 0.7   |                             |
| Nov/Nov*   | 145.4                       | 152.0 | 117.3 | 110.9 | 132.5 | 116.5 | 129.4 | 125.8 | 131.3 | 135.6 | 135.0 | <b>130.2</b> | 0.0   |                             |

Legenda/ Legend:

|  | Hoofdgroepen / <i>Major Groups</i>   | Gewichten/ <i>Weights</i><br>(per 1000) Aprt -Jun 09 | Gewichten/ <i>Weights</i> per<br>(per 1000) Apr-Jun '16 |
|--|--|--|---|
| 1  | Voeding en Niet Alcoholische Dranken / <i>Food and Non Alcoholic Beverages</i> | <b>404</b>   | <b>313</b>  |
| 2  | Alcoholische Dranken en Tabak/ <i>Alcoholic Beverages and Tabacco</i>          | <b>29</b>  | <b>18</b>   |
| 3  | Kleding en Schoeisel/ <i>Clothing and Footwear</i>                             | <b>36</b>  | <b>39</b>   |
| 4  | Huisvesting en Nutsvoorzieningen/ <i>Housing and Utilities</i>                 | <b>141</b>   | <b>229</b>  |
| 5  | Woninginrichting/ <i>Household Furnishings</i>                                 | <b>48</b>  | <b>52</b>   |
| 6  | Gezondheidszorg/ <i>Health Care</i>  | <b>26</b>  | <b>47</b>   |
| 7  | Transport/ <i>Transportation</i>   | <b>117</b>   | <b>123</b>  |
| 8  | Communicatie/ <i>Communication</i>   | <b>39</b>  | <b>43</b>   |
| 9/10   | Recreatie, Cultuur en Onderwijs/ <i>Recreation, Culture and Education</i>      | <b>41</b>  | <b>34</b>   |
| 11   | Buitenshuis Eten/ <i>Food Away from Home</i>                                   | <b>14</b>  | <b>8</b>  |
| 12   | Overige Goederen en Diensten/ <i>Miscellaneous Goods and Services</i>          | <b>107</b>   | <b>94</b>   |
|  | <b>Totaal/Total</b>  | <b>1000</b>  | <b>1000</b>   |
| <b>I (t, t-1)</b> = Maandinflaties.<br>(Berekenen van I(t,t-1) uit de indices die gepubliceerd zijn kan afrondingsverschillen opleveren)<br><i>Month- to- month Percent Changes.</i><br><i>(Computing I(t,t-1) based on published indices may produce rounding errors)</i> |  |  |   |
| <b>I (t, t-12)</b> = Variatie tussen de maand in het lopende jaar en dezelfde maand van het jaar daarvoor.<br><i>(12 -month change = same-month-previous year comparison)</i>  |  |  |   |
| # Inflatie berekend uit de gepubliceerde indices kan afrondingsverschillen opleveren/ <i>inflation computed, based on published figures, may produce rounding errors</i>   |  |  |   |
| *) Voorlopige cijfers/ <i>Provisional Figures</i>  |  |  |   |

**Prijsindexcijfers / Index Numbers & Inflatie / Inflation (% changes): Paramaribo & Wanica, Nickerie, Saramacca & Coronie en Commewijne ( Index - HBO 2007/2008): Basisperiode / Base period Apr - Jun 2009 = 100**

| HFDGRP    | OMSCHR                               | April 2016   | Mei/May 2016 | Juni/June 2016 | Basis <sup>(1)</sup> /Base |
|-----------|--------------------------------------|--------------|--------------|----------------|----------------------------|
| 1         | Voeding en Niet Alcoholische Dranken | 192.7        | 218.1        | 234.9          | <b>215.2</b>               |
| 2         | Alcoholische Dranken en Tabak        | 221.6        | 257          | 288.2          | <b>255.6</b>               |
| 3         | Kleding en Schoeisel                 | 195.3        | 207.2        | 219.5          | <b>207.3</b>               |
| 4         | Huisvesting en Nutsvoorzieningen     | 310.7        | 332.1        | 342            | <b>328.3</b>               |
| 5         | Woninginrichting                     | 168.9        | 183.7        | 193.3          | <b>182.0</b>               |
| 6         | Gezondheidszorg                      | 189.5        | 201.8        | 205.6          | <b>199.0</b>               |
| 7         | Transport                            | 190.3        | 193.8        | 198.1          | <b>194.1</b>               |
| 8         | Communicatie                         | 197.4        | 199.8        | 206.1          | <b>201.1</b>               |
| 10-Sep    | Recreatie, Cultuur en Onderwijs      | 219.1        | 242.3        | 251.9          | <b>237.8</b>               |
| 11        | Buitenshuis Eten                     | 168.6        | 179.7        | 183.9          | <b>177.4</b>               |
| 12        | Overige Goederen en Diensten         | 192.7        | 212.1        | 229.5          | <b>211.4</b>               |
| <b>TT</b> | <b>Totaal</b>                        | <b>209.8</b> | <b>229.1</b> | <b>242.2</b>   | <b>227.1</b>               |

**(1) Let op afrondingsverschillen**

Noot: van oude index naar nieuwe index: factor =  $\frac{100}{\text{Basis}}$

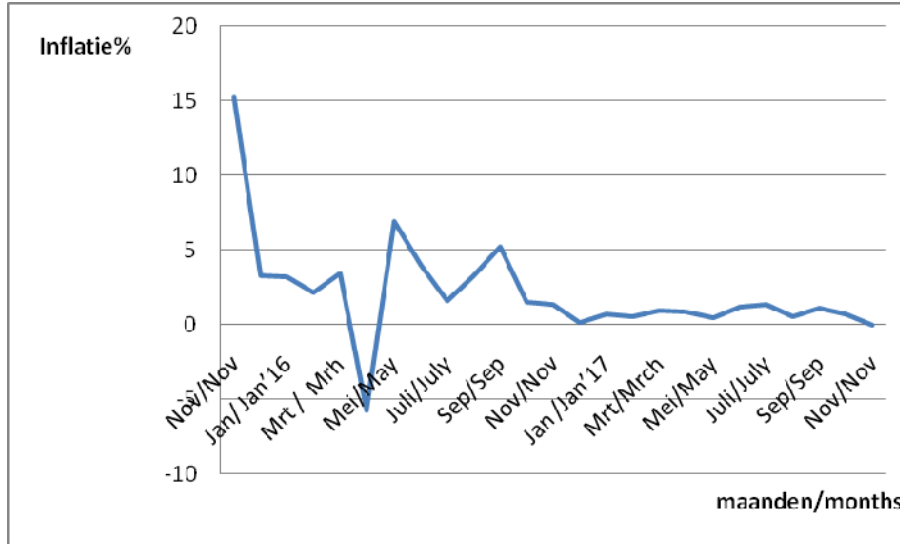
van nieuwe index naar oude index: factor =  $\frac{\text{Basis}}{100}$

Note: from old index to new index: factor =  $\frac{100}{\text{Base}}$

from new index to old index: factor =  $\frac{\text{Base}}{100}$

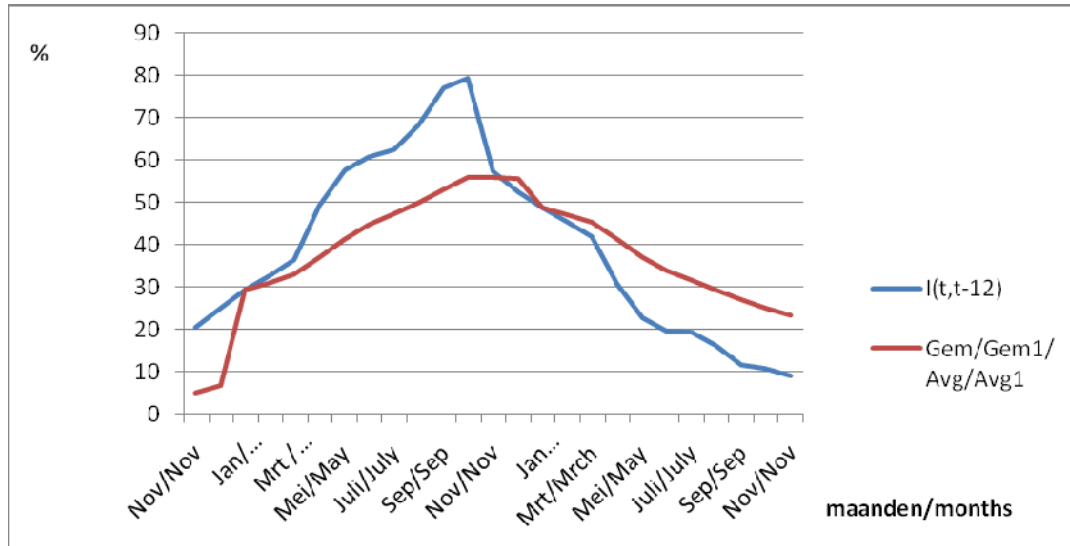
Grafiek 1a / Graph 1a

Maandinflatie, oktober 2015-October 2017/Monthly change %, November 2015 - November 2017



Grafiek 1b /Graph 1b

12maandsinflatie % en gem/gem1, November 2015 - November 2017/ 12monthly change % and Avg/Avg1, November 2015 - November 2017





## Brandstofprijzen / Fuel prices

Tabel 1.1b1 Gemiddelde maandelijks brandstofprijzen (in SRD) per brandstofsoort, november 2014 t/m november 2017/  
Table 1.1b1: Average Monthly Fuel prices (in SRD) by Type of Fuel, November 2014 up to November 2017.

| Gemiddelde Prijzen / Average Prices |          |                |        |
|-------------------------------------|----------|----------------|--------|
| Datum/Date                          | Unleaded | Super Unleaded | Diesel |
| <b>November / November 2014</b>     | 4.17     | 4.20           | 4.24   |
| December / December                 | 3.87     | 3.88           | 3.92   |
| <b>Januari 2015 / January 2015</b>  | 3.87     | 3.88           | 3.92   |
| Februari / February                 | 3.87     | 3.88           | 3.92   |
| Maart / March                       | 3.87     | 3.88           | 3.92   |
| April / April                       | 3.87     | 3.88           | 3.92   |
| Mei / May                           | 3.87     | 3.88           | 3.92   |
| Juni / June                         | 3.87     | 3.88           | 3.92   |
| Juli / July                         | 4.19     | 4.35           | 3.66   |
| Augustus / August                   | 3.94     | 4.09           | 3.50   |
| September / September               | 3.97     | 4.09           | 3.89   |
| Oktober / October                   | 3.91     | 4.00           | 3.93   |
| November / November                 | 3.96     | 4.06           | 3.93   |
| December / December                 | 4.51     | 4.62           | 4.28   |
| <b>Januari 2016 / January 2016</b>  | 4.50     | 4.54           | 4.08   |
| Februari / February                 | 4.28     | 4.34           | 4.02   |
| Maart / March                       | 4.33     | 4.43           | 4.02   |
| April / April                       | 4.63     | 4.76           | 4.14   |
| Mei / May                           | 4.63     | 4.76           | 4.14   |
| Juni / June                         | 4.63     | 4.76           | 4.14   |
| Juli / July                         | 4.63     | 4.76           | 4.14   |
| Augustus / August                   | 4.90     | 4.97           | 4.45   |
| September / September               | 4.90     | 4.97           | 4.45   |
| Oktober / October                   | 4.90     | 4.97           | 4.45   |
| November / November                 | 5.15     | 5.22           | 4.70   |
| December / December                 | 5.40     | 5.47           | 4.95   |
| <b>Januari 2017 / January 2017</b>  | 5.40     | 5.47           | 4.95   |
| Februari / February                 | 5.40     | 5.47           | 4.95   |
| Maart / March                       | 5.98     | 6.12           | 5.10   |
| April / April                       | 5.99     | 6.13           | 5.09   |
| Mei / May                           | 6.01     | 6.16           | 5.02   |
| Juni / June                         | 6.07     | 6.31           | 4.90   |
| Juli / July                         | 5.94     | 6.15           | 5.02   |
| Augustus / August                   | 5.97     | 6.14           | 5.25   |
| September / September               | 6.20     | 6.35           | 5.43   |
| Oktober / October                   | 6.39     | 6.73           | 5.63   |
| November / November                 | 6.23     | 6.30           | 5.77   |

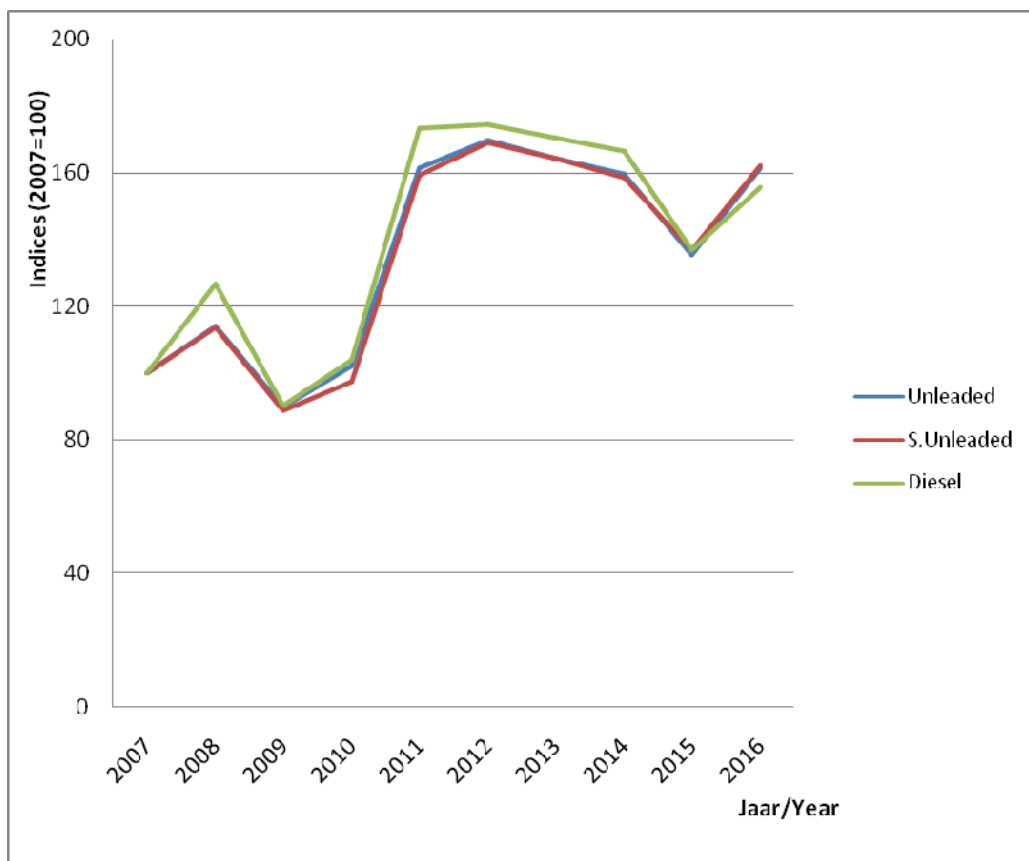
*Bron: Ministerie van Handel en Industrie /Source: Ministry of Trade and Industry*

**Tabel 1.1b2 Jaarlijks brandstof prijs indices (2007=100) per brandstofsoort, 2007 t/m 2016/**  
**Table 1.1b2: Annual Fuel Price indices (2007=100) by Type of Fuel, 2007 up to 2016.**

| Prijs Indices/Price Indices |          |                |        |
|-----------------------------|----------|----------------|--------|
| Jaar/Year                   | Unleaded | Super Unleaded | Diesel |
| 2007                        | 100      | 100            | 100    |
| 2008                        | 114      | 114            | 127    |
| 2009                        | 90       | 89             | 90     |
| 2010                        | 102      | 97             | 104    |
| 2011                        | 161      | 159            | 173    |
| 2012                        | 170      | 169            | 175    |
| 2013                        | 164      | 164            | 170    |
| 2014                        | 159      | 159            | 166    |
| 2015                        | 135      | 137            | 137    |
| 2016                        | 161      | 162            | 156    |

**Grafiek 2/ Graph 2**

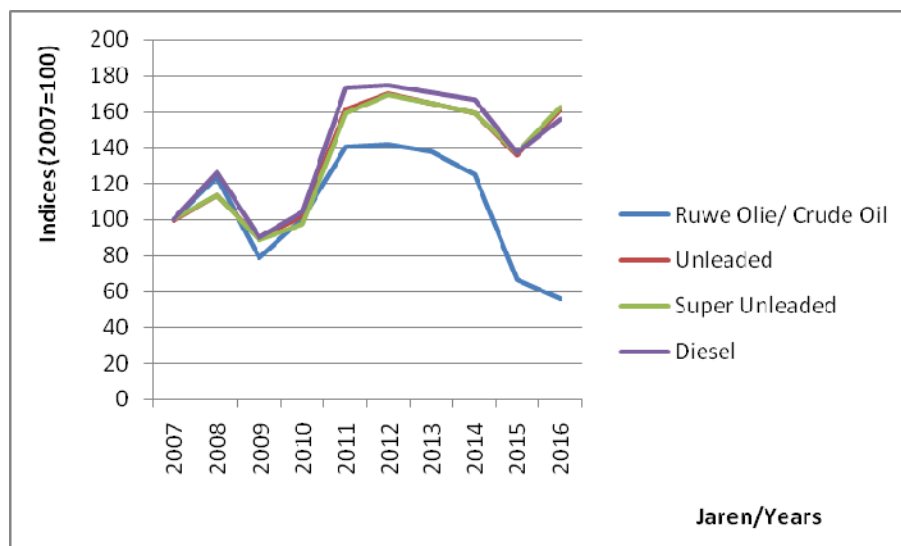
**Jaarlijks brandstof prijs indices (2007=100) per brandstofsoort, 2007 t/m 2016/**  
**Annual Fuel Price Indices (2007=100) by Type of Fuel, 2007 t/m 2016**



**Grafiek 3a/ Graph 3a**

**Jaarlijks brandstof prijs indices (2007=100) per brandstofsoort in Suriname en wereldmarkt  
prijsindex van ruwe olie, 2007-2016/**

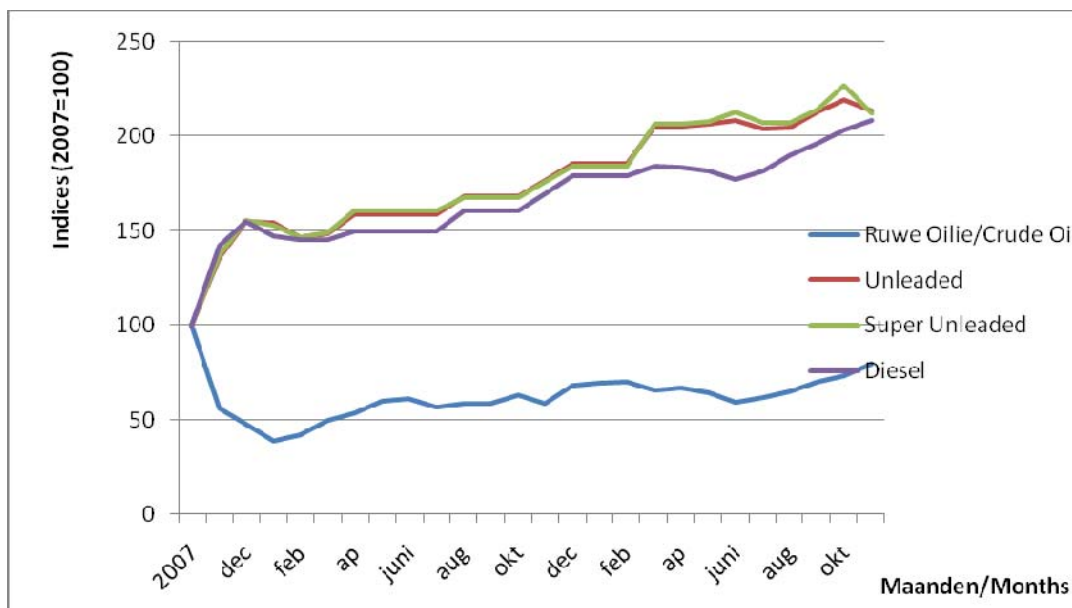
**Annual Fuel Price Indices (2007=100) by Type of Fuel in Suriname and World Market Price  
Index of Crude Oil, 2007-2016**

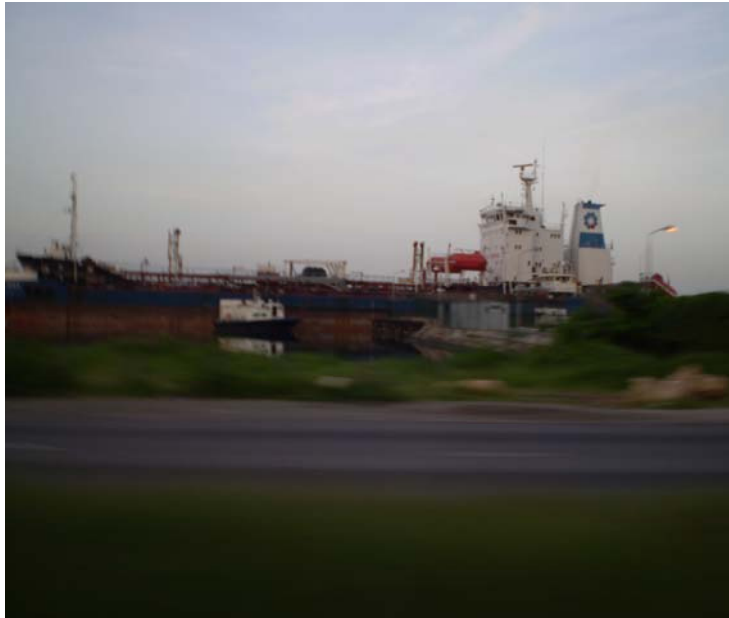


**Grafiek 3b/ Graph 3b**

**Maandelijks brandstof prijs indices (2007=100) per brandstofsoort in Suriname en wereldmarkt  
prijsindex van ruwe olie, november 2014- november 2017/**

**Monthly Fuel Price Indices (2007=100) by Type of Fuel in Suriname and World Market Price  
Index of Crude Oil, November 2014- November 2017**





## Handel/ Trade

**Tabel 1.2: Exporten<sup>1)</sup> van Suriname, in US\$, 1<sup>e</sup> kwartaal 2017/  
Table 1.2: Exports<sup>1)</sup> of Suriname, in US\$, 1<sup>st</sup> Quarter 2017**

| HS groep/<br>HS Group | Omschrijving  | Description   | 1 <sup>e</sup> kwartaal<br>2017/<br>1 <sup>st</sup> Quarter<br>2017 |
|-----------------------|---|---|---|
| 1                     | Levende dieren en dierlijke producten   | <i>Live animals and animal products</i>   | 10,184,195  |
| 2                     | Plantaardige producten (o.a. rijst, bacoven)  | <i>Vegetable products</i>   | 8,784,240   |
| 3                     | Plantaardige/dierlijke vetten, oliën en was   | <i>Animal or vegetable fats and oils + their products, edible fats, waxes</i>   | 207,847   |
| 4                     | Voedingswaren, dranken, tabak en tabakssubstituten  | <i>Foodstuffs, beverages, spirits, tobacco and tobacco substitutes</i>  | 7,237,536   |
| 5                     | Minerale Producten (o.a. ruwe olie)   | <i>Mineral Products</i>   | 30,824,210  |
| 6                     | Producten van chemische en aanverwante industrieën (o.a. aluinaarde)  | <i>Products of chemical or allied industries</i>  | 1,851,826   |
| 7                     | Kunststof, rubber en dergelijke   | <i>Plastics, rubber and articles thereof</i>  | 1,054,434   |
| 8                     | Huiden, leder, bont...., werken v. darmen   | <i>Hides and skins, leather, furskins and articles thereof, saddlery and harness;</i>   | 41,670  |
| 9                     | Hout, houtskool, kurk, vlechtwerk en vlechtmateriaal  | <i>Wood, charcoal, cork and articles thereof, plaiting materials, basket - &amp; wickerware</i>   | 10,261,189  |
| 10                    | Pulp, papier, karton en dergelijke  | <i>Pulp, paper, paperboard and articles thereof</i>   | 408,517   |
| 11                    | Textielstoffen en -waren  | <i>Textiles and textile articles</i>  | 144,126   |
| 12                    | Schoeisel, paraplu, wandelstokken, hoeden, kunstbloemen etc...  | <i>Footwear, headgear etc., feathers, artificial flowers, articles of human hair</i>  | 56,978  |
| 13                    | Steen, keramiek, glas   | <i>Stoneware, plaster, cement, ceramic product, glass and glassware</i>   | 56,861  |
| 14                    | Parels, edelstenen, halfedelstenen, edele metalen, bijouerie, munten  | <i>Pearls, precious &amp; semi-stones, precious metals, imitation jewellery, coins</i>  | 265,678,616   |
| 15                    | Onedele metalen, en metalen voorwerpen (o.a. aluminium)   | <i>Base metals and articles of base metals</i>  | 1,577,183   |
| 16                    | Machines, toestellen, el.-techn. materieel, video-audio eqpmt.  | <i>Machinery and appliances, electrical equipment. Sound and video equipment; parts thereof</i>   | 2,395,801   |
| 17                    | Vervoermaterieel en dergelijke  | <i>Vehicles, aircraft, vessels and associated equipment</i>   | 1,964,753   |
| 18-20                 | Optische instrumenten, precisie- en andere apparaten, fotografie, Wapens en munitie en Diverse goederen en producten, speelgoed | <i>Optical, photographic, measuring and precision equipment, musical instruments, Arms and ammunition and Miscellaneous manufactured articles</i> | 1,977,034   |
| 21                    | Kunstvoorwerpen   | <i>Art objects</i>  | 217   |
| 22                    | Niet elders genoemd   | <i>Not elsewhere classified</i>   | 124,126   |
|                       | <b>Totaal</b>   | <b>Total</b>  | <b>344,831,358</b>  |

1) Noot: Inclusief weder-export (exclusief district Nickerie)/  
Note: Inclusive re-export (exclusive of the district of Nickerie)

**Tabel 1.3: Exporten<sup>1)</sup> van Suriname, in US\$, 2<sup>e</sup> kwartaal 2017/  
Table 1.3: Exports<sup>1)</sup> of Suriname, in US\$, 2<sup>nd</sup> Quarter 2017**

| <b>HS groep/<br/>HS Group</b> | <b>Omschrijving</b>   | <b>Description</b>   | <b>2<sup>e</sup> kwartaal<br/>2017/<br/>2nd Quarter<br/>2017.</b> |
|-------------------------------|---|--|---|
| 1                             | Levende dieren en dierlijke producten   | <i>Live animals and animal products</i>  | 10,758,571  |
| 2                             | Plantaardige producten (o.a. rijst, bacoven)  | <i>Vegetable products</i>  | 16,773,448  |
| 3                             | Plantaardige/dierlijke vetten, oliën en was   | <i>Animal or vegetable fats and oils + their products, edible fats, waxes</i>  | 254,141   |
| 4                             | Voedingswaren, dranken, tabak en tabakssubstituten  | <i>Foodstuffs, beverages, spirits, tobacco and tobacco substitutes</i>   | 9,034,502   |
| 5                             | Minerale Producten (o.a. ruwe olie)   | <i>Mineral Products</i>  | 26,978,280  |
| 6                             | Producten van chemische en aanverwante industrieën (o.a. aluinaarde)  | <i>Products of chemical or allied industries</i>   | 1,294,273   |
| 7                             | Kunststof, rubber en dergelijke   | <i>Plastics, rubber and articles thereof</i>   | 964,314   |
| 8                             | Huiden, leder, bont...., werken v. darmen   | <i>Hides and skins, leather, furskins and articles thereof, saddlery and harness;</i>  | 48,190  |
| 9                             | Hout, houtskool, kurk, vlechtwerk en vlechtmateriaal  | <i>Wood, charcoal, cork and articles thereof, plaiting materials, basket - &amp; wickerware</i>  | 16,659,797  |
| 10                            | Pulp, papier, karton en dergelijke  | <i>Pulp, paper, paperboard and articles thereof</i>  | 419,043   |
| 11                            | Textielstoffen en -waren  | <i>Textiles and textile articles</i>   | 190,223   |
| 12                            | Schoeisel, paraplu, wandelstokken, hoeden, kunstbloemen etc...  | <i>Footwear, headgear etc., feathers, artificial flowers, articles of human hair</i>   | 45,869  |
| 13                            | Steen, keramiek, glas   | <i>Stoneware, plaster, cement, ceramic product, glass and glassware</i>  | 1,770   |
| 14                            | Parels, edelstenen, halfedelstenen, edele metalen, bijouerie, munten  | <i>Pearls, precious &amp; semi-stones, precious metals, imitation jewellery, coins</i>   | 144,774,543   |
| 15                            | Onedele metalen, en metalen voorwerpen (o.a. aluminium)   | <i>Base metals and articles of base metals</i>   | 2,635,038   |
| 16                            | Machines, toestellen, el.-techn. materieel, video-audio eqpmt.  | <i>Machinery and appliances, electrical equipment Sound and video equipment; parts thereof</i>   | 7,472,912   |
| 17                            | Vervoermaterieel en dergelijke  | <i>Vehicles, aircraft, vessels and associated equipment</i>  | 916,311   |
| 18-20                         | Optische instrumenten, precisie- en andere apparaten, fotografie, Wapens en munitie en Diverse goederen en producten, speelgoed | <i>Optical, photographic, measuring and precision equipment, musical instrument, Arms and ammunition and Miscellaneous manufactured articles</i> | 1,642,998   |
| 21                            | Kunstvoorwerpen   | <i>Art objects</i>   | 1,176   |
| 22                            | Niet elders genoemd   | <i>Not elsewhere classified</i>  | 243,153   |
|                               | <b>Totaal</b>   | <b>Total</b>   | <b>241,108,553</b>  |

1) **Noot : Inclusief weder-export (exclusief district Nickerie)/**  
**Note : Inclusive re-export(exclusive of the district of Nickerie)**

**Tabel 1.4: Exporten<sup>1)</sup> van Suriname, in US\$, 3<sup>e</sup> kwartaal 2017/  
Table 1.4: Exports<sup>1)</sup> of Suriname, in US\$, 3<sup>rd</sup> Quarter 2017**

| <b>HS groep/<br/>HS Group</b> | <b>Omschrijving</b>   | <b>Description</b>   | <b>3<sup>e</sup> kwartaal<br/>2017/<br/>3rd Quarter<br/>2017.</b> |
|-------------------------------|---|--|---|
| 1                             | Levende dieren en dierlijke producten   | <i>Live animals and animal products</i>  | 13,110,572  |
| 2                             | Plantaardige producten (o.a. rijst, bacoven)  | <i>Vegetable products</i>  | 13,188,217  |
| 3                             | Plantaardige/dierlijke vetten, oliën en was   | <i>Animal or vegetable fats and oils + their products, edible fats, waxes</i>  | 247,367   |
| 4                             | Voedingswaren, dranken, tabak en tabakssubstituten  | <i>Foodstuffs, beverages, spirits, tobacco and tobacco substitutes</i>   | 7,278,292   |
| 5                             | Minerale Producten (o.a. ruwe olie)   | <i>Mineral Products</i>  | 41,439,589  |
| 6                             | Producten van chemische en aanverwante industrieën (o.a. aluinaarde)  | <i>Products of chemical or allied industries</i>   | 1,353,048   |
| 7                             | Kunststof, rubber en dergelijke   | <i>Plastics, rubber and articles thereof</i>   | 894,791   |
| 8                             | Huiden, leder, bont...., werken v. darmen   | <i>Hides and skins, leather, furskins and articles thereof, saddlery and harness;</i>  | 49,002  |
| 9                             | Hout, houtskool, kurk, vlechtwerk en vlechtmateriaal  | <i>Wood, charcoal, cork and articles thereof, plaiting materials, basket - &amp; wickerware</i>  | 14,703,902  |
| 10                            | Pulp, papier, karton en dergelijke  | <i>Pulp, paper, paperboard and articles thereof</i>  | 474,828   |
| 11                            | Textielstoffen en -waren  | <i>Textiles and textile articles</i>   | 164,067   |
| 12                            | Schoeisel, paraplu, wandelstokken, hoeden, kunstbloemen etc...  | <i>Footwear, headgear etc., feathers, artificial flowers, articles of human hair</i>   | 76,173  |
| 13                            | Steen, keramiek, glas   | <i>Stoneware, plaster, cement, ceramic product, glass and glassware</i>  | 8,954   |
| 14                            | Parels, edelstenen, halfedelstenen, edele metalen, bijouerie, munten  | <i>Pearls, precious &amp; semi-stones, precious metals, imitation jewellery, coins</i>   | 339,664,767   |
| 15                            | Onedele metalen, en metalen voorwerpen (o.a. aluminium)   | <i>Base metals and articles of base metals</i>   | 1,140,314   |
| 16                            | Machines, toestellen, el.-techn. materieel, video-audio eqpmt.  | <i>Machinery and appliances, electrical equipment Sound and video equipment; parts thereof</i>   | 4,731,552   |
| 17                            | Vervoermaterieel en dergelijke  | <i>Vehicles, aircraft, vessels and associated equipment</i>  | 1,465,792   |
| 18-20                         | Optische instrumenten, precisie- en andere apparaten, fotografie, Wapens en munitie en Diverse goederen en producten, speelgoed | <i>Optical, photographic, measuring and precision equipment, musical instrument, Arms and ammunition and Miscellaneous manufactured articles</i> | 2,550,547   |
| 21                            | Kunstvoorwerpen   | <i>Art objects</i>   | 13,714  |
| 22                            | Niet elders genoemd   | <i>Not elsewhere classified</i>  | 302,588   |
|                               | <b>Totaal</b>   | <b>Total</b>   | <b>442,858,076</b>  |

2) **Noot : Inclusief weder-export (exclusief district Nickerie)/  
Note : Inclusive re-export(exclusive of the district of Nickerie)**

**Tabel 1.5: Importen van Suriname, in US\$, 1<sup>e</sup> kwartaal 2017/  
Table 1.5: Imports of Suriname, in US\$, 1<sup>st</sup> Quarter 2017**

| <b>HS Groep/<br/>HS Group</b> | <b>Omschrijving</b>   | <b>Description</b>   | <b>1<sup>e</sup> kwartaal<br/>2017/<br/>1st Quarter<br/>2017</b> |
|-------------------------------|---|--|--|
| 1                             | Levende dieren en dierlijke producten   | <i>Live animals and animal products</i>  | 6,448,295  |
| 2                             | Plant aardige producten (o.a. rijst, baco ven)  | <i>Vegetable products</i>  | 8,559,368  |
| 3                             | Plant aardige/dierlijke vetten, oliën en was  | <i>Animal or vegetable fats and oils + their products, edible fats, waxes</i>  | 2,966,225  |
| 4                             | Voedingswaren, dranken, tabak en tabakssubstituten  | <i>Foodstuffs, beverages, spirits, tobacco and tobacco substitutes</i>   | 25,045,248   |
| 5                             | Minerale Producten (o.a. ruwe olie)   | <i>Mineral Products</i>  | 48,944,362   |
| 6                             | Producten van chemische en aanverwante industrieën (o.a. aluinaarde)  | <i>Products of chemical or allied industries</i>   | 29,424,502   |
| 7                             | Kunststof, rubber en dergelijke   | <i>Plastics, rubber and articles thereof</i>   | 22,712,515   |
| 8                             | Huiden, leder, bont...., werken v. darmen   | <i>Hides and skins, leather, fur skins and articles thereof, saddlery and harness;</i>   | 205,220  |
| 9                             | Hout, houtskool, kurk, vlechtwerk en vlechtmateriaal  | <i>Wood, charcoal, cork and articles thereof, plaiting materials, basket - &amp; wicker ware</i>   | 777,691  |
| 10                            | Pulp, papier, karton en dergelijke  | <i>Pulp, paper, paperboard and articles thereof</i>  | 6,820,003  |
| 11                            | Textielstoffen en -waren  | <i>Textiles and textile articles</i>   | 5,342,442  |
| 12                            | Schoeisel, parapluus, wandelstokken, hoeden, kunstbloemen etc...  | <i>Footwear, headgear etc., feathers, artificial flowers, articles of human hair</i>   | 711,243  |
| 13                            | Steen, keramiek, glas   | <i>Stoneware, plaster, cement, ceramic product, glass and glassware</i>  | 4,264,423  |
| 14                            | Parels, edelstenen, halfedelstenen, edele metalen, bijou terie, munten  | <i>Pearls, precious &amp; semi-stones, precious metals, imitation jewellery, coins</i>   | 6,332  |
| 15                            | Onedele metalen, en metalen voorwerpen (o.a. aluminium)   | <i>Base metals and articles of base metals</i>   | 17,258,860   |
| 16                            | Machines, toestellen, el.-techn. materieel, video-audio equipment.  | <i>Machinery and appliances, electrical equipment Sound and video equipment; parts thereof</i>   | 65,013,875   |
| 17                            | Vervoermaterieel en dergelijke  | <i>Vehicles, aircraft, vessels and associated equipment</i>  | 17,689,167   |
| 18-20                         | Optische instrumenten, precisie- en andere apparaten, fotografie, Wapens en munitie en Diverse goederen en producten, speelgoed | <i>Optical, photographic, measuring and precision equipment, musical instrument, Arms and ammunition and Miscellaneous manufactured articles</i> | 8,336,737  |
| 21                            | Kunstvoorwerpen   | <i>Art objects</i>   | 390,982  |
| 22                            | Niet elders genoemd   | <i>Not elsewhere classified</i>  | 203,814  |
|                               | <b>Totaal</b>   | <b>Total</b>   | <b>271,121,305</b>   |



**Tabel 1.6 Importen van Suriname, in US\$, 2<sup>e</sup> kwartaal 2017/  
Table 1.6: Imports of Suriname, in US\$, 2<sup>nd</sup> Quarter 2017**

| <b>HS Groep/<br/>HS Group</b> | <b>Omschrijving</b>   | <b>Description</b>   | <b>2<sup>e</sup> kwartaal<br/>2017/<br/>2nd Quarter<br/>2017</b> |
|-------------------------------|---|--|--|
| 1                             | Levende dieren en dierlijke producten   | <i>Live animals and animal products</i>  | 5,816,259  |
| 2                             | Plantaardige producten (o.a. rijst, bacoven)  | <i>Vegetable products</i>  | 7,764,814  |
| 3                             | Plantaardige/dierlijke vetten, oliën en was   | <i>Animal or vegetable fats and oils + their products, edible fats, waxes</i>  | 4,814,108  |
| 4                             | Voedingswaren, dranken, tabak en tabakssubstituten  | <i>Foodstuffs, beverages, spirits, tobacco and tobacco substitutes</i>   | 26,590,400   |
| 5                             | Minerale Producten (o.a. ruwe olie)   | <i>Mineral Products</i>  | 42,032,221   |
| 6                             | Producten van chemische en aanverwante industrieën (o.a. aluinaarde)  | <i>Products of chemical or allied industries</i>   | 32,077,792   |
| 7                             | Kunststof, rubber en dergelijke   | <i>Plastics, rubber and articles thereof</i>   | 15,872,591   |
| 8                             | Huiden, leder, bont...., werken v. darmen   | <i>Hides and skins, leather, furskins and articles thereof, saddlery and harness;</i>  | 375,399  |
| 9                             | Hout, houtskool, kurk, vlechtwerk en vlechtmateriaal  | <i>Wood, charcoal, cork and articles thereof, plaiting materials, basket - &amp; wickerware</i>  | 969,124  |
| 10                            | Pulp, papier, karton en dergelijke  | <i>Pulp, paper, paperboard and articles thereof</i>  | 6,669,625  |
| 11                            | Textielstoffen en -waren  | <i>Textiles and textile articles</i>   | 3,977,775  |
| 12                            | Schoeisel, paraplu, wandelstokken, hoeden, kunstbloemen etc...  | <i>Footwear, headgear etc., feathers, artificial flowers, articles of human hair</i>   | 1,099,495  |
| 13                            | Steen, keramiek, glas   | <i>Stoneware, plaster, cement, ceramic product, glass and glassware</i>  | 5,070,391  |
| 14                            | Parels, edelstenen, halfedelstenen, edele metalen, bijouerie, munten  | <i>Pearls, precious &amp; semi-stones, precious metals, imitation jewellery, coins</i>   | 683,787  |
| 15                            | Onedele metalen, en metalen voorwerpen (o.a. aluminium)   | <i>Base metals and articles of base metals</i>   | 21,886,126   |
| 16                            | Machines, toestellen, el.-techn. materieel, video-audio equipment.  | <i>Machinery and appliances, electrical equipment Sound and video equipment; parts thereof</i>   | 73,067,248   |
| 17                            | Vervoermaterieel en dergelijke  | <i>Vehicles, aircraft, vessels and associated equipment</i>  | 22,376,401   |
| 18-20                         | Optische instrumenten, precisie- en andere apparaten, fotografie, Wapens en munitie en Diverse goederen en producten, speelgoed | <i>Optical, photographic, measuring and precision equipment, musical instrument, Arms and ammunition and Miscellaneous manufactured articles</i> | 8,732,144  |
| 21                            | Kunstvoorwerpen   | <i>Art objects</i>   | 31,369   |
| 22                            | Niet elders genoemd   | <i>Not elsewhere classified</i>  | 240,158  |
|                               | <b>Totaal</b>   | <b>Total</b>   | <b>280,147,226</b>   |

**Tabel 1.7: Importen van Suriname, in US\$, 3<sup>e</sup> kwartaal 2017/  
Table 1.7: Imports of Suriname, in US\$, 3<sup>rd</sup> Quarter 2017**

| <b>HS Groep/<br/>HS Group</b> | <b>Omschrijving</b>   | <b>Description</b>   | <b>3<sup>e</sup> kwartaal<br/>2017/<br/>3rd Quarter<br/>2017</b> |
|-------------------------------|---|--|--|
| <b>1</b>                      | Levende dieren en dierlijke producten   | <i>Live animals and animal products</i>  | 10,641,284   |
| <b>2</b>                      | Plantaardige producten (o.a. rijst, bacoven)  | <i>Vegetable products</i>  | 8,601,541  |
| <b>3</b>                      | Plantaardige/dierlijke vetten, oliën en was   | <i>Animal or vegetable fats and oils + their products, edible fats, waxes</i>  | 3,156,430  |
| <b>4</b>                      | Voedingswaren, dranken, tabak en tabakssubstituten  | <i>Foodstuffs, beverages, spirits, tobacco and tobacco substitutes</i>   | 32,208,720   |
| <b>5</b>                      | Minerale Producten (o.a. ruwe olie)   | <i>Mineral Products</i>  | 37,232,356   |
| <b>6</b>                      | Producten van chemische en aanverwante industrieën (o.a. aluinaarde)  | <i>Products of chemical or allied industries</i>   | 30,968,246   |
| <b>7</b>                      | Kunststof, rubber en dergelijke   | <i>Plastics, rubber and articles thereof</i>   | 19,554,526   |
| <b>8</b>                      | Huiden, leder, bont...., werken v. darmen   | <i>Hides and skins, leather, furskins and articles thereof, saddlery and harness;</i>  | 464,334  |
| <b>9</b>                      | Hout, houtskool, kurk, vlechtwerk en vlechtmateriaal  | <i>Wood, charcoal, cork and articles thereof, plaiting materials, basket - &amp; wickerware</i>  | 1,074,825  |
| <b>10</b>                     | Pulp, papier, karton en dergelijke  | <i>Pulp, paper, paperboard and articles thereof</i>  | 8,150,470  |
| <b>11</b>                     | Textielstoffen en -waren  | <i>Textiles and textile articles</i>   | 5,564,745  |
| <b>12</b>                     | Schoeisel, paraplu, wandelstokken, hoeden, kunstbloemen etc...  | <i>Footwear, headgear etc., feathers, artificial flowers, articles of human hair</i>   | 1,521,042  |
| <b>13</b>                     | Steen, keramiek, glas   | <i>Stoneware, plaster, cement, ceramic product, glass and glassware</i>  | 3,599,962  |
| <b>14</b>                     | Parels, edelstenen, halfedelstenen, edele metalen, bijouerie, munten  | <i>Pearls, precious &amp; semi-stones, precious metals, imitation jewellery, coins</i>   | 16,108   |
| <b>15</b>                     | Onedele metalen, en metalen voorwerpen (o.a. aluminium)   | <i>Base metals and articles of base metals</i>   | 22,969,441   |
| <b>16</b>                     | Machines, toestellen, el.-techn. materieel, video-audio equipment.  | <i>Machinery and appliances, electrical equipment Sound and video equipment; parts thereof</i>   | 72,205,976   |
| <b>17</b>                     | Vervoermaterieel en dergelijke  | <i>Vehicles, aircraft, vessels and associated equipment</i>  | 29,032,352   |
| <b>18-20</b>                  | Optische instrumenten, precisie- en andere apparaten, fotografie, Wapens en munitie en Diverse goederen en producten, speelgoed | <i>Optical, photographic, measuring and precision equipment, musical instrument, Arms and ammunition and Miscellaneous manufactured articles</i> | 10,106,495   |
| <b>21</b>                     | Kunstvoorwerpen   | <i>Art objects</i>   | 74,202   |
| <b>22</b>                     | Niet elders genoemd   | <i>Not elsewhere classified</i>  | 477,834  |
|                               | <b>Totaal</b>   | <b>Total</b>   | <b>297,620,890</b>   |

**Tabel 1.8: Handelsbalans van Suriname, in US\$, 1<sup>e</sup> kwartaal – 3<sup>e</sup> kwartaal 2017/  
Table 1.8: Tradebalance of Suriname, in US\$, 1<sup>st</sup> – 3<sup>rd</sup> Quarter 2017**

| <b>Jaar</b> | <b>Importen</b> | <b>Exporten<sup>1)</sup></b> | <b>Handelsbalans</b> |
|-------------|-----------------|------------------------------|----------------------|
| 2017.1*     | 271,121,305     | 344,831,358                  | 73,710,054           |
| 2017.2*     | 280,147,226     | 241,108,553                  | -39,038,672          |
| 2017.3*     | 297,620,890     | 442,858,076                  | 145,237,186          |

1): inclusief weder-exporten / re-exports included

\* voorlopige cijfers/ provisional figures

**Tabel 1.9: Totale importen, exporten en handelsbalans naar handelsblok, 1<sup>e</sup> kwartaal 2017/  
Table 1.9: Total imports, exports and tradebalance by trade-union, 1<sup>st</sup> quarter 2017**

| <b>Handelsblok/<br/>Trade Union</b>  | <b>Import/<br/>Import</b> | <b>Export/<br/>Export</b> | <b>Wederexport/<br/>Re-Export</b> | <b>Totale Export/<br/>Total Export</b> | <b>Handelsblans/<br/>Tradebalance</b> |
|--------------------------------------|---------------------------|---------------------------|-----------------------------------|--|---------------------------------------|
| ASEAN                                | 7,665,893                 | 2,539,935                 | 500,604                           | 3,040,540                              | <b>-4,625,353</b>                     |
| CARICOM                              | 52,051,092                | 37,239,650                | 2,532,462                         | 39,772,111                             | <b>-12,278,981</b>                    |
| EUROPEAN                             | 57,633,227                | 40,222,878                | 744,984                           | 40,967,863                             | <b>-16,665,364</b>                    |
| MERCOSUR                             | 6,248,561                 | 347,800                   | 589,178                           | 936,979                                | <b>-5,311,582</b>                     |
| NAFTA                                | 91,299,010                | 3,370,885                 | 1,776,025                         | 5,146,910                              | <b>-86,152,100</b>                    |
| Overige/Not else<br>where classified | 56,223,522                | 251,736,898               | 3,230,058                         | 254,966,956                            | <b>198,743,434</b>                    |
| <b>Totaal/Total</b>                  | <b>271,121,305</b>        | <b>335,458,047</b>        | <b>9,373,312</b>                  | <b>344,831,358</b>                     | <b>73,710,054</b>                     |

**Tabel 1.10: Totale importen, exporten en handelsbalans naar handelsblok, 2<sup>e</sup> kwartaal 2017\*/  
Table 1.10: Total imports, exports and tradebalance by trade-union, 2<sup>nd</sup> quarter 2017\***

| <b>Handelsblok/<br/>Trade Union</b>  | <b>Import/<br/>Import</b> | <b>Export/<br/>Export</b> | <b>Wederexport/<br/>Re-Export</b> | <b>Totale Export/<br/>Total Export</b> | <b>Handelsblans/<br/>Tradebalance</b> |
|--------------------------------------|---------------------------|---------------------------|-----------------------------------|--|---------------------------------------|
| ASEAN                                | 5,302,039                 | 6,008,080                 | 1,868,183                         | 7,876,263                              | 2,574,224                             |
| CARICOM                              | 55,872,738                | 42,969,093                | 2,518,555                         | 45,487,648                             | -10,385,090                           |
| EUROPEAN                             | 65,678,246                | 52,992,565                | 856,366                           | 53,848,931                             | -11,829,315                           |
| MERCOSUR                             | 6,063,114                 | 2,192,279                 | 359,032                           | 2,551,311                              | -3,511,803                            |
| NAFTA                                | 92,319,633                | 4,188,411                 | 1,298,299                         | 5,486,710                              | -86,832,923                           |
| Overige/Not else<br>where classified | 54,911,456                | 122,995,748               | 2,861,942                         | 125,857,690                            | 70,946,234                            |
| <b>Totaal/Total</b>                  | <b>280,147,226</b>        | <b>231,346,175</b>        | <b>9,762,378</b>                  | <b>241,108,553</b>                     | <b>-39,038,672</b>                    |

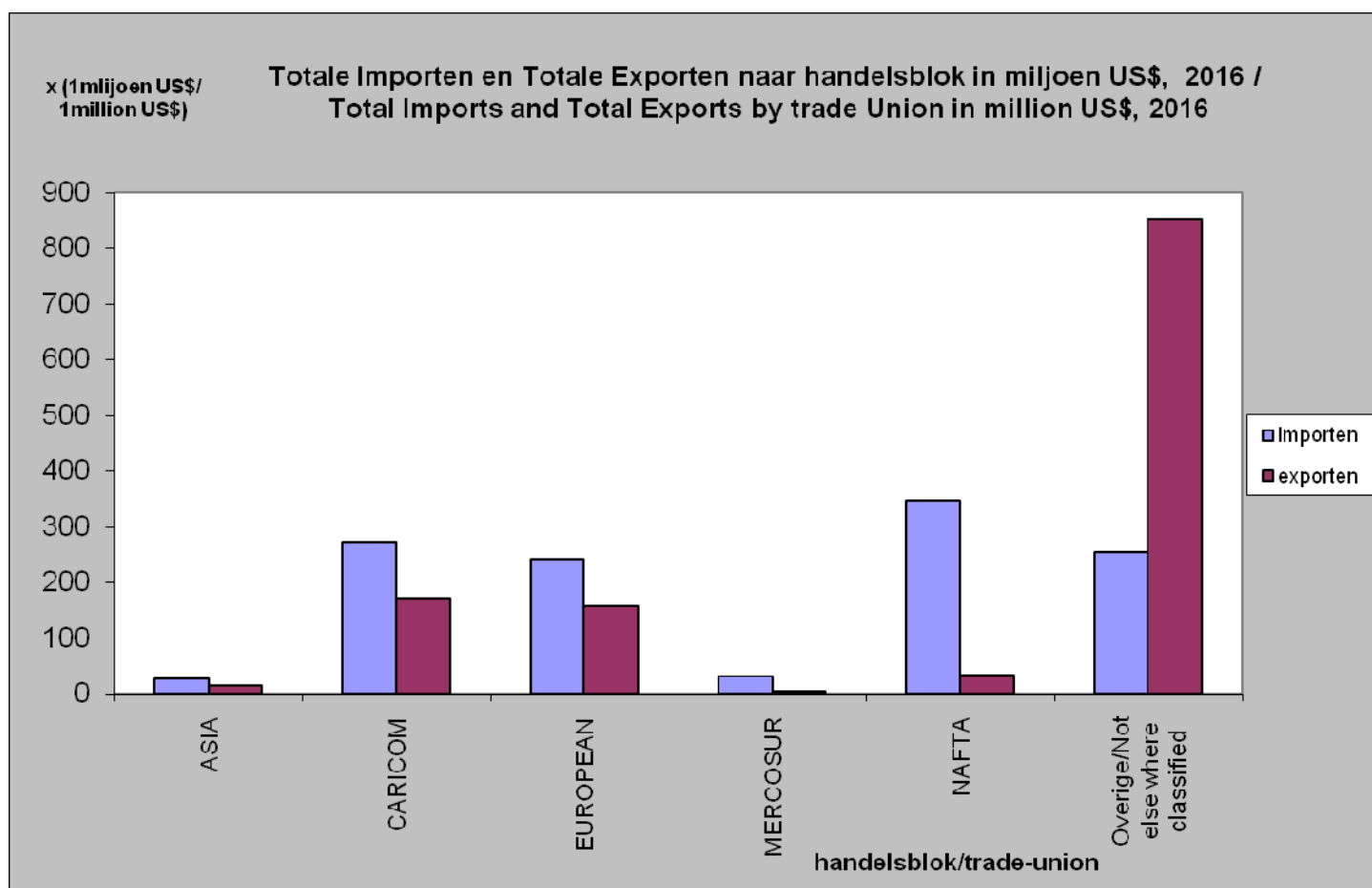
\* voorlopige cijfers/ provisional figures

**Tabel 1.11: Totale importen, exporten en handelsbalans naar handelsblok, 3<sup>e</sup> kwartaal 2017\*/  
Table 1.11: Total imports, exports and tradebalance by trade-union, 3<sup>rd</sup> quarter 2017\***

| Handelsblok/<br>Trade Union          | Import/<br>Import  | Export/<br>Export  | Wederexport/<br>Re-Export | Totale Export/<br>Total Export | Handelsblans/<br>Tradebalance |
|--------------------------------------|--------------------|--------------------|---------------------------|--------------------------------|-------------------------------|
| ASEAN                                | 8,554,998          | 4,736,018          | 872,686                   | 5,608,704                      | -2,946,294                    |
| CARICOM                              | 45,845,893         | 47,898,242         | 2,978,386                 | 50,876,628                     | 5,030,735                     |
| EUROPEAN                             | 64,708,086         | 51,394,115         | 706,556                   | 52,100,671                     | -12,607,416                   |
| MERCOSUR                             | 8,663,171          | 1,233,462          | 630,271                   | 1,863,732                      | -6,799,439                    |
| NAFTA                                | 95,956,712         | 6,831,245          | 1,855,363                 | 8,686,608                      | -87,270,104                   |
| Overige/Not else<br>where classified | 73,892,029         | 320,929,190        | 2,792,542                 | 323,721,733                    | 249,829,703                   |
| <b>Totaal/Total</b>                  | <b>297,620,890</b> | <b>433,022,272</b> | <b>9,835,804</b>          | <b>442,858,076</b>             | <b>145,237,186</b>            |

\* voorlopige cijfers/ provisional figures

**Grafiek 4 / Graph 4**



## **II FINANCIËLE INDICATOREN/**



## **FINANCIAL INDICATORS**

## II . Financiële Indicatoren / Financial Indicators

**Tabel 2.1: Bruto uitbetaalde salarissen van landsdienaren per maand, 2<sup>e</sup> kwartaal 2017/**  
**Table 2.1: Gross Paid Salaries of Civil Servants per month, 2<sup>nd</sup> Quarter 2017**

| Interval            | April / April      |                    |                        |                      |                    |                        |                  |                         |                        |
|---------------------|--------------------|--------------------|------------------------|----------------------|--------------------|------------------------|------------------|-------------------------|------------------------|
| (in Srd)            | Mannelijk/<br>Male | Salaris/<br>Salary | Gemiddelde/<br>Average | Vrouwelijk<br>Female | Salaris/<br>Salary | Gemiddelde/<br>Average | Totaal/<br>Total | Salarissen/<br>Salaries | Gemiddelde/<br>Average |
| 00000 -- 00480      | 800                | 292,709.45         | 365.89                 | 845                  | 300,564.83         | 355.70                 | 1,661            | 597,677.68              | 359.83                 |
| 00481 -- 00960      | 1,401              | 1,026,474.60       | 732.67                 | 992                  | 854,977.57         | 861.87                 | 2,452            | 1,931,718.50            | 787.81                 |
| 00961 -- 01440      | 3,645              | 4,798,470.29       | 1,316.45               | 4,999                | 5,855,691.25       | 1,171.37               | 8,867            | 10,922,725.51           | 1,231.84               |
| 01441 -- 01920      | 4,499              | 7,365,639.02       | 1,637.17               | 2,653                | 4,414,910.58       | 1,664.12               | 7,375            | 12,143,717.44           | 1,646.61               |
| 01921 -- 02400      | 3,981              | 8,606,031.68       | 2,161.78               | 2,430                | 5,207,920.89       | 2,143.18               | 6,476            | 13,955,822.02           | 2,155.01               |
| 02401 -- 02880      | 2,560              | 6,738,002.12       | 2,632.03               | 1,913                | 5,006,928.65       | 2,617.32               | 4,525            | 11,879,367.53           | 2,625.27               |
| 02881 -- 03360      | 1,716              | 5,337,260.62       | 3,110.29               | 1,620                | 5,110,189.91       | 3,154.44               | 3,373            | 10,564,359.51           | 3,132.04               |
| 03361-- 03840       | 1,497              | 5,375,647.52       | 3,590.95               | 3,297                | 11,894,815.95      | 3,607.77               | 4,864            | 17,524,135.01           | 3,602.82               |
| 03841 -- 04320      | 1,107              | 4,508,788.66       | 4,072.98               | 2,748                | 11,233,875.84      | 4,088.02               | 3,914            | 15,983,096.10           | 4,083.57               |
| 04321 -- 04800      | 891                | 4,052,019.60       | 4,547.72               | 2,227                | 10,203,857.21      | 4,581.88               | 3,178            | 14,531,177.03           | 4,572.43               |
| 04801 -- 05280      | 551                | 2,770,204.59       | 5,027.59               | 819                  | 4,092,963.02       | 4,997.51               | 1,397            | 6,998,333.51            | 5,009.54               |
| 05281 -- 05760      | 350                | 1,922,701.21       | 5,493.43               | 307                  | 1,691,612.87       | 5,510.14               | 673              | 3,702,242.82            | 5,501.10               |
| 05761 -- 06240      | 240                | 1,437,374.61       | 5,989.06               | 181                  | 1,083,288.21       | 5,985.02               | 432              | 2,586,233.58            | 5,986.65               |
| 06241 -- 06720      | 149                | 961,308.81         | 6,451.74               | 103                  | 665,726.23         | 6,463.36               | 272              | 1,758,029.24            | 6,463.34               |
| 06721 -- 07200      | 90                 | 624,011.08         | 6,933.46               | 83                   | 578,277.86         | 6,967.20               | 177              | 1,229,889.90            | 6,948.53               |
| > 07201             | 592                | 7,286,823.59       | 12,308.82              | 508                  | 6,410,048.15       | 12,618.21              | 1,128            | 14,113,759.40           | 12,512.20              |
| <b>Totaal/Total</b> | 24,069             | 63,103,467.45      | 2,621.77               | 25,725               | 74,605,649.02      | 2,900.12               | 50,764           | 140,422,284.78          | 2,766.18               |
| Mediaan/Median      |                    |                    | 2,124.77               |                      |                    | 2,637.86               |                  |                         |                        |

In 'totaal' zit een deel ( 970 personen met een salaristotaal van SRD 2,713,168.13) waarvan het geslacht niet gerapporteerd is/  
*In 'total' there is a part ( 970 persons with a salary total of SRD 2,713,168.13) of which sex was not reported*

| Interval            | Mei / May          |                    |                        |                      |                    |                        |                  |                         |                        |
|---------------------|--------------------|--------------------|------------------------|----------------------|--------------------|------------------------|------------------|-------------------------|------------------------|
| (in Srd)            | Mannelijk/<br>Male | Salaris/<br>Salary | Gemiddelde/<br>Average | Vrouwelijk<br>Female | Salaris/<br>Salary | Gemiddelde/<br>Average | Totaal/<br>Total | Salarissen/<br>Salaries | Gemiddelde/<br>Average |
| 00000 -- 00480      | 795                | 291,758.08         | 366.99                 | 831                  | 298,995.05         | 359.80                 | 1,641            | 594,463.40              | 362.26                 |
| 00481 -- 00960      | 1,361              | 990,509.69         | 727.78                 | 593                  | 488,256.54         | 823.37                 | 2,014            | 1,529,457.98            | 759.41                 |
| 00961 -- 01440      | 667                | 811,178.87         | 1,216.16               | 269                  | 320,087.13         | 1,189.91               | 982              | 1,185,191.13            | 1,206.92               |
| 01441 -- 01920      | 294                | 509,092.64         | 1,731.61               | 2,659                | 4,660,352.22       | 1,752.67               | 3,066            | 5,365,519.54            | 1,750.01               |
| 01921 -- 02400      | 5,399              | 11,763,216.90      | 2,178.78               | 3,861                | 8,220,728.63       | 2,129.17               | 9,481            | 20,465,551.47           | 2,158.59               |
| 02401 -- 02880      | 3,769              | 9,985,870.23       | 2,649.47               | 2,664                | 7,083,014.35       | 2,658.79               | 6,547            | 17,366,339.55           | 2,652.56               |
| 02881 -- 03360      | 2,979              | 9,236,044.64       | 3,100.38               | 2,191                | 6,869,622.49       | 3,135.38               | 5,222            | 16,268,135.50           | 3,115.31               |
| 03361-- 03840       | 2,248              | 8,023,761.81       | 3,569.29               | 3,327                | 12,011,101.94      | 3,610.19               | 5,636            | 20,255,228.37           | 3,593.90               |
| 03841 -- 04320      | 1,581              | 6,449,172.30       | 4,079.17               | 2,819                | 11,511,561.14      | 4,083.56               | 4,448            | 18,157,691.49           | 4,082.21               |
| 04321 -- 04800      | 1,228              | 5,587,203.48       | 4,549.84               | 2,218                | 10,159,745.55      | 4,580.59               | 3,500            | 15,993,865.64           | 4,569.68               |
| 04801 -- 05280      | 908                | 4,558,489.85       | 5,020.36               | 743                  | 3,712,306.08       | 4,996.37               | 1,680            | 8,416,310.08            | 5,009.71               |
| 05281 -- 05760      | 752                | 4,159,499.64       | 5,531.25               | 1,120                | 6,247,895.53       | 5,578.48               | 1,915            | 10,647,397.85           | 5,560.00               |
| 05761 -- 06240      | 553                | 3,310,859.73       | 5,987.09               | 841                  | 5,025,156.59       | 5,975.22               | 1,424            | 8,516,743.33            | 5,980.86               |
| 06241 -- 06720      | 340                | 2,198,603.87       | 6,466.48               | 384                  | 2,480,733.10       | 6,460.24               | 757              | 4,894,030.97            | 6,465.03               |
| 06721 -- 07200      | 239                | 1,658,506.17       | 6,939.36               | 244                  | 1,694,298.05       | 6,943.84               | 496              | 3,443,203.52            | 6,941.94               |
| > 07201             | 907                | 10,229,267.56      | 11,278.13              | 895                  | 9,384,307.43       | 10,485.26              | 1,843            | 20,001,237.64           | 10,852.54              |
| <b>Totaal/Total</b> | 24,020             | 79,763,035.46      | 3,320.69               | 25,659               | 90,168,161.82      | 3,514.09               | 50,652           | 173,100,367.46          | 3,417.44               |
| Mediaan/Median      |                    |                    | 2,846.04               |                      |                    | 3,308.86               |                  |                         |                        |

In 'totaal' zit een deel ( 973 personen met een salaristotaal van SRD 3,169,170.18) waarvan het geslacht niet gerapporteerd is/  
*In 'total' there is a part (973.persons with a salary total of SRD 3,169,170.18) of which sex was not reported*

| Interval            | Juni / June        |                    |                        |                      |                    |                        |                  |                         |                        |
|---------------------|--------------------|--------------------|------------------------|----------------------|--------------------|------------------------|------------------|-------------------------|------------------------|
| (in Srd)            | Mannelijk/<br>Male | Salaris/<br>Salary | Gemiddelde/<br>Average | Vrouwelijk<br>Female | Salaris/<br>Salary | Gemiddelde/<br>Average | Totaal/<br>Total | Salarissen/<br>Salaries | Gemiddelde/<br>Average |
| 00000 -- 00480      | 795                | 292,701.90         | 368.18                 | 824                  | 298,219.94         | 361.92                 | 1,628            | 592,790.08              | 364.12                 |
| 00481 -- 00960      | 1,199              | 902,202.30         | 752.46                 | 585                  | 482,355.08         | 824.54                 | 1,846            | 1,436,785.75            | 778.32                 |
| 00961 -- 01440      | 869                | 1,063,094.48       | 1,223.35               | 2,321                | 3,118,127.34       | 1,343.44               | 3,284            | 4,303,899.21            | 1,310.57               |
| 01441 -- 01920      | 4,654              | 8,214,599.11       | 1,765.06               | 3,865                | 6,538,312.16       | 1,691.67               | 8,684            | 15,034,243.67           | 1,731.26               |
| 01921 -- 02400      | 3,343              | 7,123,920.05       | 2,131.00               | 2,428                | 5,268,989.01       | 2,170.09               | 5,840            | 12,541,678.56           | 2,147.55               |
| 02401 -- 02880      | 3,711              | 9,686,109.59       | 2,610.11               | 2,429                | 6,415,659.69       | 2,641.28               | 6,172            | 16,185,810.19           | 2,622.46               |
| 02881 -- 03360      | 2,326              | 7,218,649.31       | 3,103.46               | 1,570                | 4,905,423.77       | 3,124.47               | 3,915            | 12,182,376.92           | 3,111.72               |
| 03361-- 03840       | 1,719              | 6,162,787.54       | 3,585.10               | 3,067                | 11,094,384.17      | 3,617.34               | 4,831            | 17,422,115.75           | 3,606.32               |
| 03841 -- 04320      | 1,362              | 5,544,022.89       | 4,070.50               | 2,611                | 10,672,170.30      | 4,087.39               | 4,012            | 16,376,649.97           | 4,081.92               |
| 04321 -- 04800      | 1,026              | 4,665,631.65       | 4,547.40               | 2,077                | 9,524,187.47       | 4,585.55               | 3,144            | 14,378,210.96           | 4,573.22               |
| 04801 -- 05280      | 824                | 4,139,642.14       | 5,023.84               | 717                  | 3,575,008.51       | 4,986.06               | 1,562            | 7,819,498.35            | 5,006.08               |
| 05281 -- 05760      | 566                | 3,130,640.99       | 5,531.17               | 995                  | 5,552,366.31       | 5,580.27               | 1,599            | 8,894,970.53            | 5,562.83               |
| 05761 -- 06240      | 401                | 2,397,016.93       | 5,977.60               | 800                  | 4,779,855.06       | 5,974.82               | 1,227            | 7,333,175.59            | 5,976.51               |
| 06241 -- 06720      | 331                | 2,143,068.15       | 6,474.53               | 347                  | 2,246,575.56       | 6,474.28               | 694              | 4,493,520.01            | 6,474.81               |
| 06721 -- 07200      | 231                | 1,602,774.11       | 6,938.42               | 229                  | 1,590,525.65       | 6,945.53               | 475              | 3,296,772.36            | 6,940.57               |
| > 07201             | 907                | 10,327,501.21      | 11,386.44              | 944                  | 9,939,199.96       | 10,528.81              | 1,907            | 20,786,970.60           | 10,900.35              |
| <b>Totaal/Total</b> | 24,264             | 74,614,362.35      | 3,075.11               | 25,809               | 86,001,359.98      | 3,332.22               | 50,820           | 163,079,468.50          | 3,208.96               |
| Mediaan/Median      |                    |                    | 2,565.59               |                      |                    | 2,970.52               |                  |                         |                        |

In 'totaal' zit een deel ( 747 personen met een salaristotaal van SRD 2,463,746.16) waarvan het geslacht niet gerapporteerd is/  
*In 'total' there is a part ( 747 persons with a salary total of SRD 2,463,746.16) of which sex was not reported*



**Tabel 2.2: Bruto uitbetaalde salarissen van landsdienaren per maand, 3<sup>e</sup> kwartaal 2017/  
Table 2.2: Gross Paid Salaries of Civil Servants per month, 3<sup>rd</sup> Quarter 2017**

| <b>Interval</b>     |                |                       |                    |
|---------------------|----------------|-----------------------|--------------------|
| <b>(in Srd)</b>     | <b>Totaal/</b> | <b>Salarissen/</b>    | <b>Gemiddelde/</b> |
|                     | <b>Total</b>   | <b>Salaries</b>       | <b>Average</b>     |
| 00000 -- 00480      | 1,689          | 603,994.76            | 357.6              |
| 00481 -- 00960      | 1,964          | 1,516,823.96          | 772.31             |
| 00961 -- 01440      | 1,165          | 1,376,754.32          | 1,181.76           |
| 01441 -- 01920      | 2,562          | 4,566,637.14          | 1,782.45           |
| 01921 -- 02400      | 2,860          | 6,424,618.14          | 2,246.37           |
| 02401 -- 02880      | 6,322          | 16,656,675.52         | 2,634.72           |
| 02881 -- 03360      | 4,182          | 13,156,093.69         | 3,145.89           |
| 03361-- 03840       | 3,674          | 13,268,941.31         | 3,611.58           |
| 03841 -- 04320      | 2,993          | 12,186,949.42         | 4,071.82           |
| 04321 -- 04800      | 3,274          | 14,906,503.05         | 4,552.99           |
| 04801 -- 05280      | 1,887          | 9,497,997.51          | 5,033.39           |
| 05281 -- 05760      | 1,711          | 9,446,366.72          | 5,520.96           |
| 05761 -- 06240      | 1,422          | 8,519,497.90          | 5,991.21           |
| 06241 -- 06720      | 2,217          | 14,385,410.46         | 6,488.68           |
| 06721 -- 07200      | 2,149          | 15,055,162.69         | 7,005.66           |
| > 07201             | 10,588         | 107,354,593.66        | 10,139.27          |
| <b>Totaal/Total</b> | <b>50,659</b>  | <b>248,923,020.25</b> | <b>4,913.70</b>    |

| Interval            | Augustus / August  |                    |                        |                      |                    |                        |                  |                         |                        |
|---------------------|--------------------|--------------------|------------------------|----------------------|--------------------|------------------------|------------------|-------------------------|------------------------|
| (in Srd)            | Mannelijk/<br>Male | Salaris/<br>Salary | Gemiddelde/<br>Average | Vrouwelijk<br>Female | Salaris/<br>Salary | Gemiddelde/<br>Average | Totaal/<br>Total | Salarissen/<br>Salaries | Gemiddelde/<br>Average |
| 00000 -- 00480      | 107                | 34,040.14          | 318.13                 | 98                   | 29,572.24          | 301.76                 | 214              | 65,718.10               | 307.09                 |
| 00481 -- 00960      | 792                | 631,557.32         | 797.42                 | 530                  | 451,041.12         | 851.02                 | 1,376            | 1,128,363.85            | 820.03                 |
| 00961 -- 01440      | 1,824              | 2,057,737.78       | 1,128.15               | 1,297                | 1,441,586.10       | 1,111.48               | 3,149            | 3,532,302.95            | 1,121.72               |
| 01441 -- 01920      | 2,539              | 4,575,047.51       | 1,801.91               | 4,502                | 7,455,843.56       | 1,656.12               | 7,198            | 12,292,723.28           | 1,707.80               |
| 01921 -- 02400      | 4,936              | 10,418,537.13      | 2,110.72               | 2,762                | 5,872,910.95       | 2,126.33               | 7,804            | 16,517,743.59           | 2,116.57               |
| 02401 -- 02880      | 3,309              | 8,765,812.65       | 2,649.08               | 2,392                | 6,269,410.17       | 2,620.99               | 5,732            | 15,115,960.61           | 2,637.12               |
| 02881 -- 03360      | 2,513              | 7,829,695.76       | 3,115.68               | 1,993                | 6,177,678.86       | 3,099.69               | 4,529            | 14,078,089.72           | 3,108.43               |
| 03361-- 03840       | 1,682              | 6,027,955.69       | 3,583.80               | 3,105                | 11,222,279.79      | 3,614.26               | 4,830            | 17,409,045.20           | 3,604.36               |
| 03841 -- 04320      | 1,632              | 6,651,747.34       | 4,075.83               | 2,737                | 11,186,708.16      | 4,087.22               | 4,407            | 17,994,608.02           | 4,083.19               |
| 04321 -- 04800      | 1,156              | 5,277,035.86       | 4,564.91               | 2,058                | 9,429,571.95       | 4,581.91               | 3,249            | 14,867,974.40           | 4,576.17               |
| 04801 -- 05280      | 742                | 3,733,964.89       | 5,032.30               | 707                  | 3,524,205.78       | 4,984.73               | 1,471            | 7,367,930.93            | 5,008.79               |
| 05281 -- 05760      | 726                | 4,007,793.42       | 5,520.38               | 1,082                | 6,033,441.70       | 5,576.19               | 1,850            | 10,276,018.97           | 5,554.60               |
| 05761 -- 06240      | 492                | 2,942,761.39       | 5,981.22               | 843                  | 5,036,072.53       | 5,973.99               | 1,359            | 8,122,971.20            | 5,977.17               |
| 06241 -- 06720      | 302                | 1,952,641.92       | 6,465.70               | 354                  | 2,290,502.31       | 6,470.35               | 670              | 4,334,333.54            | 6,469.15               |
| 06721 -- 07200      | 251                | 1,741,324.36       | 6,937.55               | 243                  | 1,685,968.14       | 6,938.14               | 501              | 3,475,984.09            | 6,938.09               |
| > 07201             | 1,089              | 12,854,275.74      | 11,803.74              | 1,018                | 11,368,798.96      | 11,167.78              | 2,136            | 24,484,856.06           | 11,462.95              |
| <b>Totaal/Total</b> | 24,092             | 79,501,928.90      | 3,299.93               | 25,721               | 89,475,592.32      | 3,478.70               | 50,475           | 171,064,624.51          | 3,389.10               |
| Mediaan/Median      |                    |                    | 2,669.14               |                      |                    | 3,189.28               |                  |                         |                        |

In 'totaal' zit een deel ( 662 personen met een salaristotaal van SRD 2,087,103.29) waarvan het geslacht niet gerapporteerd is/  
*In 'total' there is a part ( 662 persons with a salary total of SRD 2,087,103.29) of which sex was not reported*

| Interval            | September/ September |                    |                        |                      |                    |                        |                  |                         |                        |
|---------------------|----------------------|--------------------|------------------------|----------------------|--------------------|------------------------|------------------|-------------------------|------------------------|
| (in Srd)            | Mannelijk/<br>Male   | Salaris/<br>Salary | Gemiddelde/<br>Average | Vrouwelijk<br>Female | Salaris/<br>Salary | Gemiddelde/<br>Average | Totaal/<br>Total | Salarissen/<br>Salaries | Gemiddelde/<br>Average |
| 0000 -- 00480       | 126                  | 41,892.97          | 332.48                 | 120                  | 37,448.53          | 312.07                 | 255              | 81,581.52               | 319.93                 |
| 00481 -- 00960      | 1,510                | 1,239,488.34       | 820.85                 | 1,234                | 1,065,064.34       | 863.10                 | 2,802            | 2,352,899.48            | 839.72                 |
| 00961 -- 01440      | 1,138                | 1,366,748.05       | 1,201.01               | 560                  | 710,312.13         | 1,268.41               | 1,725            | 2,108,963.11            | 1,222.59               |
| 01441 -- 01920      | 2,129                | 3,807,222.12       | 1,788.27               | 4,482                | 7,427,271.51       | 1,657.13               | 6,755            | 11,471,170.25           | 1,698.17               |
| 01921 -- 02400      | 4,579                | 9,694,843.50       | 2,117.24               | 2,734                | 5,810,358.27       | 2,125.22               | 7,382            | 15,651,512.40           | 2,120.23               |
| 02401 -- 02880      | 3,463                | 9,171,607.26       | 2,648.46               | 2,383                | 6,246,466.22       | 2,621.26               | 5,876            | 15,497,862.21           | 2,637.49               |
| 02881 -- 03360      | 2,528                | 7,878,390.59       | 3,116.45               | 1,922                | 5,960,689.85       | 3,101.30               | 4,475            | 13,916,565.02           | 3,109.85               |
| 03361-- 03840       | 1,684                | 6,036,677.63       | 3,584.73               | 3,095                | 11,186,263.61      | 3,614.30               | 4,818            | 17,366,893.50           | 3,604.59               |
| 03841 -- 04320      | 1,542                | 6,278,643.92       | 4,071.75               | 2,750                | 11,238,966.58      | 4,086.90               | 4,331            | 17,677,956.44           | 4,081.73               |
| 04321 -- 04800      | 1,096                | 4,995,550.78       | 4,557.98               | 2,070                | 9,484,150.57       | 4,581.72               | 3,207            | 14,669,306.87           | 4,574.15               |
| 04801 -- 05280      | 809                  | 4,066,585.93       | 5,026.68               | 811                  | 4,047,285.14       | 4,990.49               | 1,643            | 8,228,742.00            | 5,008.36               |
| 05281 -- 05760      | 743                  | 4,100,308.02       | 5,518.58               | 1,110                | 6,183,414.14       | 5,570.64               | 1,906            | 10,576,521.11           | 5,549.07               |
| 05761 -- 06240      | 520                  | 3,111,750.73       | 5,984.14               | 856                  | 5,117,545.50       | 5,978.44               | 1,403            | 8,391,582.17            | 5,981.17               |
| 06241 -- 06720      | 335                  | 2,166,042.00       | 6,465.80               | 320                  | 2,067,912.64       | 6,462.23               | 668              | 4,318,504.10            | 6,464.83               |
| 06721 -- 07200      | 267                  | 1,852,869.86       | 6,939.59               | 216                  | 1,499,217.23       | 6,940.82               | 491              | 3,407,740.66            | 6,940.41               |
| > 07201             | 1,553                | 16,464,574.97      | 10,601.79              | 1,001                | 11,669,726.54      | 11,658.07              | 2,637            | 28,968,826.85           | 10,985.52              |
| <b>Totaal/Total</b> | 24,022               | 82,273,196.67      | 3,424.91               | 25,664               | 89,752,092.80      | 3,497.20               | 50,374           | 174,686,627.69          | 3,467.79               |
| Mediaan/Median      |                      |                    | 2,303.14               |                      |                    | 3,211.28               |                  |                         |                        |

In 'totaal' zit een deel ( 688 personen met een salaristotaal van SRD 2,661,338.22) waarvan het geslacht niet gerapporteerd is/  
*In 'total' there is a part ( 688 persons with a salary total of SRD 2,661,338.22) of which sex was not reported*

**Tabel 2.3: Bruto uitbetaalde salarissen van landsdienaren per maand, 4<sup>e</sup> kwartaal 2017/  
Table 2.3: Gross Paid Salaries of Civil Servants per month, 4<sup>th</sup> Quarter 2017**

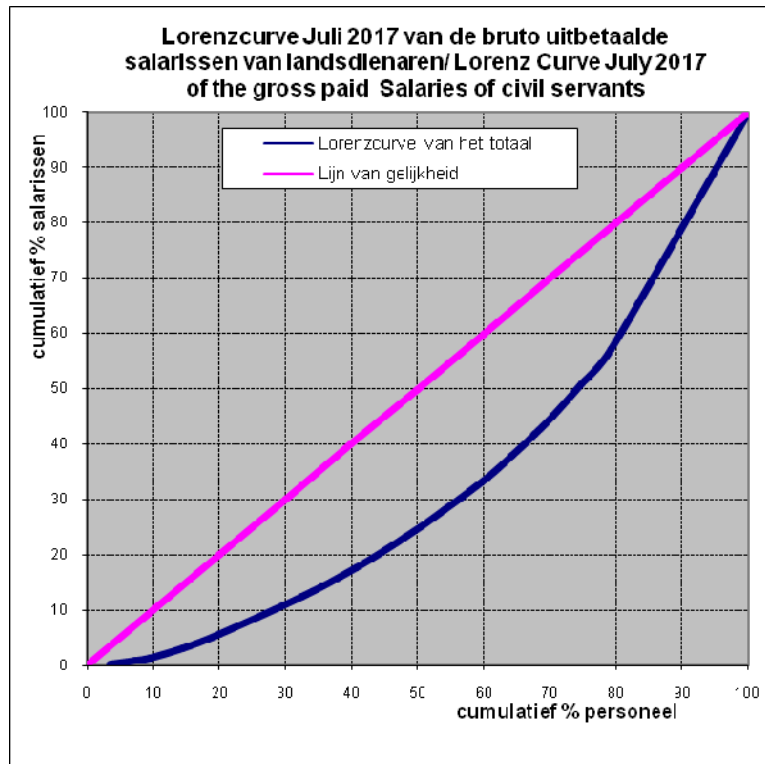
| Interval            | Oktober / October  |                      |                        |                      |                      |                        |                  |                         |                        |
|---------------------|--------------------|----------------------|------------------------|----------------------|----------------------|------------------------|------------------|-------------------------|------------------------|
| (in Srd)            | Mannelijk/<br>Male | Salaris/<br>Salary   | Gemiddelde/<br>Average | Vrouwelijk<br>Female | Salaris/<br>Salary   | Gemiddelde/<br>Average | Totaal/<br>Total | Salarissen/<br>Salaries | Gemiddelde/<br>Average |
| 00000 -- 00480      | 689                | 311,482.76           | 452.08                 | 756                  | 341,721.53           | 452.01                 | 1,456            | 655,919.67              | 450.49                 |
| 00481 -- 00960      | 1,418              | 1,047,736.91         | 738.88                 | 579                  | 483,449.94           | 834.97                 | 2,044            | 1,572,314.85            | 769.23                 |
| 00961 -- 01440      | 554                | 665,948.97           | 1,202.07               | 382                  | 506,202.48           | 1,325.14               | 956              | 1,195,170.85            | 1,250.18               |
| 01441 -- 01920      | 2,205              | 3,982,395.35         | 1,806.07               | 4,488                | 7,438,805.15         | 1,657.49               | 6,826            | 11,639,660.05           | 1,705.19               |
| 01921 -- 02400      | 4,782              | 10,088,497.01        | 2,109.68               | 2,764                | 5,870,058.41         | 2,123.75               | 7,635            | 16,147,632.64           | 2,114.95               |
| 02401 -- 02880      | 3,521              | 9,323,318.26         | 2,647.92               | 2,413                | 6,325,232.90         | 2,621.31               | 5,962            | 15,721,710.70           | 2,636.99               |
| 02881 -- 03360      | 2,647              | 8,252,544.07         | 3,117.70               | 1,871                | 5,787,566.65         | 3,093.30               | 4,547            | 14,130,001.41           | 3,107.54               |
| 03361-- 03840       | 1,720              | 6,158,081.64         | 3,580.28               | 3,105                | 11,227,823.66        | 3,616.05               | 4,867            | 17,540,130.73           | 3,603.89               |
| 03841 -- 04320      | 1,575              | 6,405,951.26         | 4,067.27               | 2,761                | 11,280,939.51        | 4,085.82               | 4,375            | 17,847,392.75           | 4,079.40               |
| 04321 -- 04800      | 996                | 4,541,947.13         | 4,560.19               | 2,120                | 9,721,927.23         | 4,585.81               | 3,163            | 14,480,436.26           | 4,578.07               |
| 04801 -- 05280      | 660                | 3,321,532.96         | 5,032.63               | 682                  | 3,391,721.13         | 4,973.20               | 1,359            | 6,797,897.81            | 5,002.13               |
| 05281 -- 05760      | 796                | 4,402,857.86         | 5,531.23               | 1,324                | 7,393,486.35         | 5,584.20               | 2,166            | 12,055,076.83           | 5,565.59               |
| 05761 -- 06240      | 560                | 3,351,353.59         | 5,984.56               | 844                  | 5,044,116.74         | 5,976.44               | 1,440            | 8,612,351.23            | 5,980.80               |
| 06241 -- 06720      | 266                | 1,720,112.22         | 6,466.59               | 217                  | 1,405,351.35         | 6,476.27               | 491              | 3,176,538.78            | 6,469.53               |
| 06721 -- 07200      | 238                | 1,650,373.60         | 6,934.34               | 219                  | 1,521,587.29         | 6,947.89               | 463              | 3,213,704.37            | 6,941.05               |
| > 07201             | 1,031              | 12,066,904.78        | 11,704.08              | 666                  | 8,103,275.84         | 12,167.08              | 1,729            | 20,483,674.19           | 11,847.12              |
| <b>Totaal/Total</b> | <b>23,658</b>      | <b>77,291,038.37</b> | <b>3,267.01</b>        | <b>25,191</b>        | <b>85,843,266.16</b> | <b>3,407.70</b>        | <b>49,479</b>    | <b>165,269,613.12</b>   | <b>3,340.20</b>        |
| Mediaan/Median      |                    |                      | 2,698.39               |                      |                      | 3,192.45               |                  |                         |                        |

In 'totaal' zit een deel (630 personen met een salaristotaal van SRD 2,135,308.59) waarvan het geslacht niet gerapporteerd is/  
In 'total' there is a part (630 persons with a salary total of SRD 2,135,308.59 ) of which sex was not reported

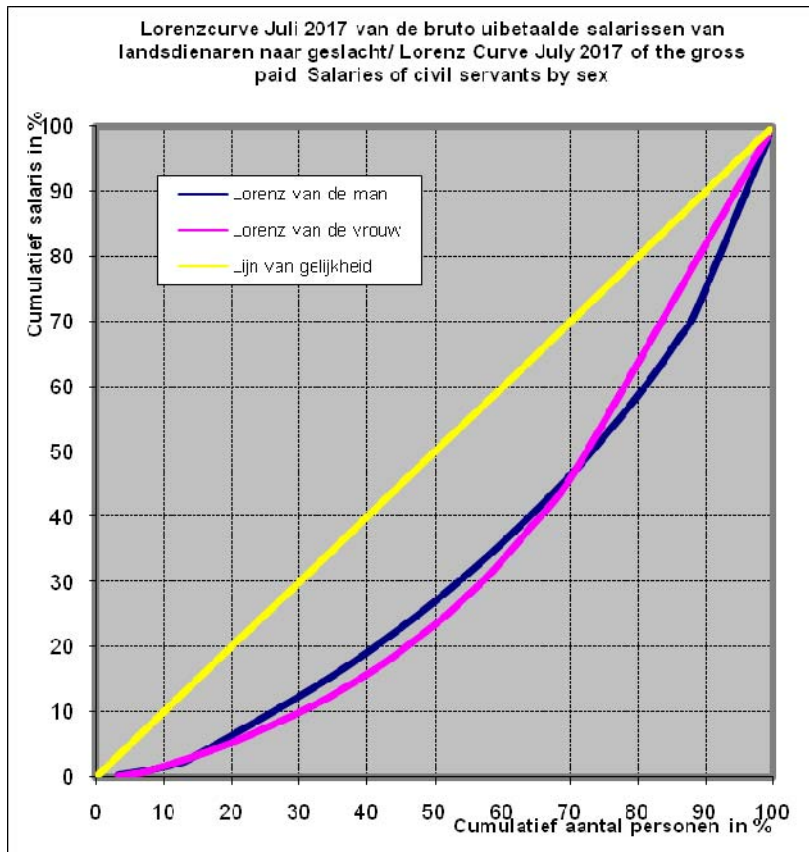
| Interval            | November / November |                    |                        |                      |                    |                        |                  |                         |                        |
|---------------------|---------------------|--------------------|------------------------|----------------------|--------------------|------------------------|------------------|-------------------------|------------------------|
| (in Srd)            | Mannelijk/<br>Male  | Salaris/<br>Salary | Gemiddelde/<br>Average | Vrouwelijk<br>Female | Salaris/<br>Salary | Gemiddelde/<br>Average | Totaal/<br>Total | Salarissen/<br>Salaries | Gemiddelde/<br>Average |
| 0000 -- 00480       | 690                 | 314,874.35         | 456.34                 | 787                  | 352,015.13         | 447.29                 | 1,488            | 669,778.59              | 450.12                 |
| 00481 -- 00960      | 1,115               | 881,409.38         | 790.50                 | 595                  | 502,840.47         | 845.11                 | 1,756            | 1,424,499.60            | 811.22                 |
| 00961 -- 01440      | 818                 | 963,469.49         | 1,177.84               | 414                  | 543,477.05         | 1,312.75               | 1,253            | 1,531,234.07            | 1,222.05               |
| 01441 -- 01920      | 2,255               | 4,075,778.38       | 1,807.44               | 4,442                | 7,364,566.00       | 1,657.94               | 6,838            | 11,674,591.70           | 1,707.31               |
| 01921 -- 02400      | 4,766               | 10,048,271.74      | 2,108.32               | 2,725                | 5,785,685.68       | 2,123.19               | 7,597            | 16,058,856.74           | 2,113.84               |
| 02401 -- 02880      | 3,446               | 9,140,559.64       | 2,652.51               | 2,361                | 6,185,924.67       | 2,620.04               | 5,840            | 15,413,053.93           | 2,639.22               |
| 02881 -- 03360      | 2,671               | 8,337,620.29       | 3,121.54               | 1,881                | 5,822,625.58       | 3,095.49               | 4,583            | 14,255,983.63           | 3,110.62               |
| 03361-- 03840       | 1,771               | 6,340,133.42       | 3,579.97               | 3,149                | 11,371,590.31      | 3,611.18               | 4,958            | 17,851,517.98           | 3,600.55               |
| 03841 -- 04320      | 1,475               | 6,000,225.06       | 4,067.95               | 2,600                | 10,614,748.83      | 4,082.60               | 4,123            | 16,814,360.97           | 4,078.19               |
| 04321 -- 04800      | 1,075               | 4,900,787.94       | 4,558.87               | 2,021                | 9,266,337.90       | 4,585.03               | 3,145            | 14,393,066.32           | 4,576.49               |
| 04801 -- 05280      | 751                 | 3,778,596.78       | 5,031.42               | 701                  | 3,490,496.17       | 4,979.31               | 1,467            | 7,343,585.08            | 5,005.85               |
| 05281 -- 05760      | 871                 | 4,818,411.71       | 5,532.05               | 1,351                | 7,538,037.32       | 5,579.60               | 2,269            | 12,620,449.68           | 5,562.12               |
| 05761 -- 06240      | 665                 | 3,985,247.35       | 5,992.85               | 948                  | 5,663,672.21       | 5,974.34               | 1,651            | 9,879,236.17            | 5,983.79               |
| 06241 -- 06720      | 260                 | 1,680,543.69       | 6,463.63               | 243                  | 1,572,249.42       | 6,470.16               | 512              | 3,311,441.22            | 6,467.66               |
| 06721 -- 07200      | 222                 | 1,543,651.35       | 6,953.38               | 285                  | 1,978,690.09       | 6,942.77               | 520              | 3,613,642.72            | 6,949.31               |
| > 07201             | 823                 | 10,192,196.80      | 12,384.20              | 967                  | 11,505,616.51      | 11,898.26              | 1,822            | 21,970,253.71           | 12,058.32              |
| <b>Totaal/Total</b> | 23,674              | 77,001,777.37      | 3,252.59               | 25,470               | 89,558,573.34      | 3,516.24               | 49,822           | 168,825,552.11          | 3,388.57               |
| Mediaan/Median      |                     |                    | 2,706.54               |                      |                    | 3,241.19               |                  |                         |                        |

In 'totaal' zit een deel (678 personen met een salaristotaal van SRD 2,265,201.40) waarvan het geslacht niet gerapporteerd is/  
*In 'total' there is a part (678 persons with a salary total of SRD 2,265,201.40) of which sex was not reported*

Grafiek 5a / Graph 5a



Grafiek 5b / Graph 5b



# III MONETAIRE INDICATOREN,



# MONETARY INDICATORS

### Wisselkoersen / Exchange Rates

**Tabel 3.1: Officiële gemiddelde wisselkoers van de US\$, januari t/m november 2017/**

**Table 3.1: Average Official Exchange Rate of the US\$, January up to November 2017**

| Maand             | Gemiddelde<br>Average | Month             |
|-------------------|-----------------------|-------------------|
| <b>Januari'17</b> | 7.53                  | <b>January'17</b> |
| Februari          | 7.60                  | February          |
| Maart             | 7.61                  | March             |
| April             | 7.61                  | April             |
| Mei               | 7.60                  | May               |
| Juni              | 7.58                  | June              |
| Juli              | 7.54                  | July              |
| Augustus          | 7.50                  | August            |
| September         | 7.50                  | September         |
| Oktober           | 7.51                  | October           |
| November          | 7.51                  | November          |

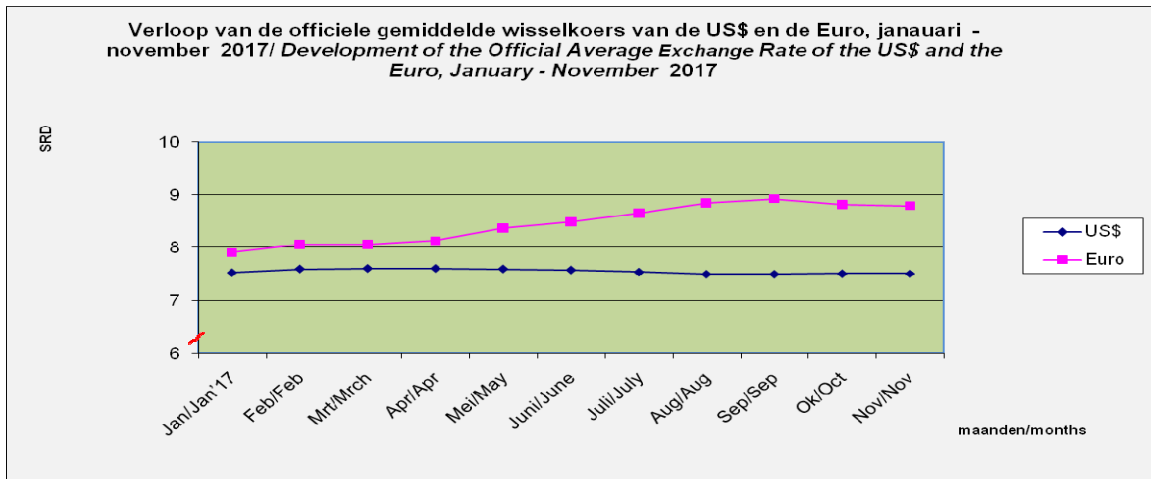
Bron: Centrale Bank van Suriname/ Source: Central Bank of Suriname

**Tabel 3.2: Officiële gemiddelde wisselkoers van de Euro, januari t/m november 2017/**

**Table 3.2: Average Official Exchange Rate of the Euro, January up to November 2017**

| Maand             | Gemiddelde<br>Average | Month             |
|-------------------|-----------------------|-------------------|
| <b>Januari'17</b> | 7.91                  | <b>January'17</b> |
| Februari          | 8.06                  | February          |
| Maart             | 8.06                  | March             |
| April             | 8.13                  | April             |
| Mei               | 8.37                  | May               |
| Juni              | 8.49                  | June              |
| Juli              | 8.65                  | July              |
| Augustus          | 8.84                  | August            |
| September         | 8.92                  | September         |
| Oktober           | 8.81                  | October           |
| November          | 8.79                  | November          |

Bron: Centrale Bank van Suriname/ Source: Central Bank of Suriname





**Tabel 3.3: Gemiddelde parallelmarkt wisselkoers van de US\$, januari t/m november 2017/**  
**Table 3.3: Average Parallel market Exchange Rate of the US\$, January up to November 2017**

| Maand             | Gemiddelde Average | Month             |
|-------------------|--------------------|-------------------|
| <b>Januari'17</b> | 7.530              | <b>January'17</b> |
| Februari          | 7.599              | February          |
| Maart             | 7.608              | March             |
| April             | 7.611              | April             |
| Mei               | 7.600              | May               |
| Juni              | 7.579              | June              |
| Juli              | 7.538              | July              |
| Augustus          | 7.501              | August            |
| September         | 7.500              | September         |
| Oktober           | 7.508              | October           |
| November          | 7.510              | November          |

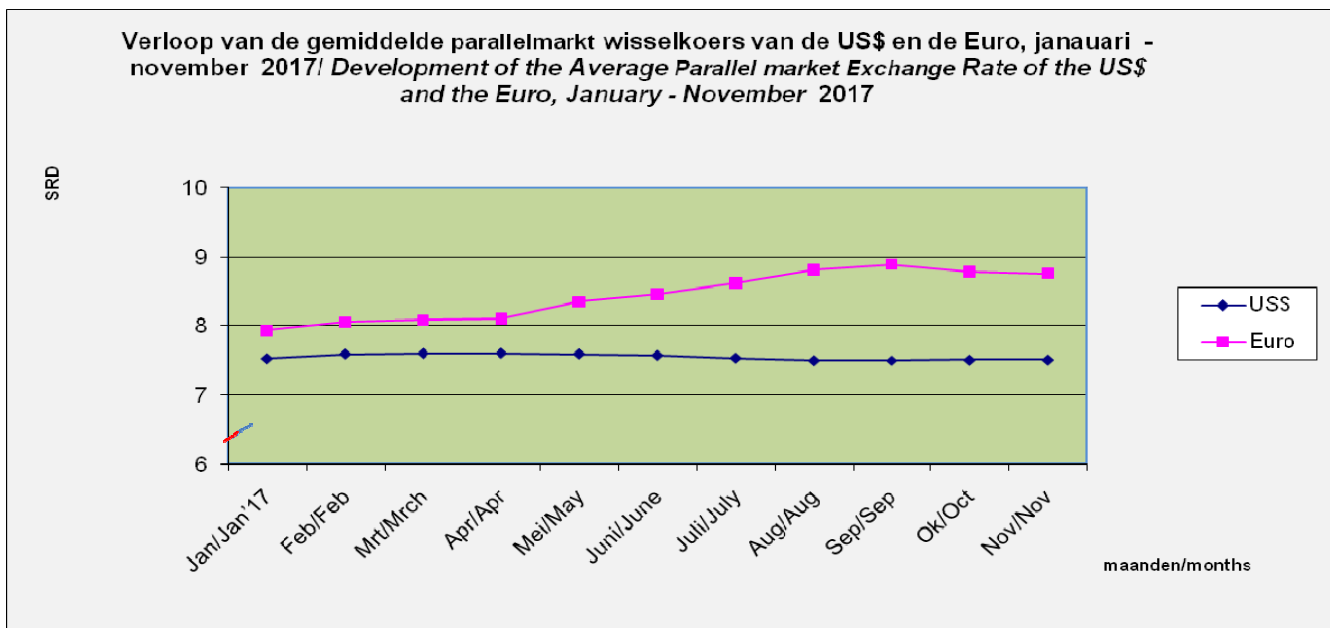
Bron: Centrale Bank van SurinameSource: Central Bank of Suriname

**Tabel 3.4: Gemiddelde parallelmarkt wisselkoers van de Euro, januari t/m november 2017/**  
**Table 3.4: Average Parallel market Exchange Rate of the Euro, January up to November 2017**

| Maand             | Gemiddelde Average | Month             |
|-------------------|--------------------|-------------------|
| <b>Januari'17</b> | 7.946              | <b>January'17</b> |
| Februari          | 8.059              | February          |
| Maart             | 8.090              | March             |
| April             | 8.114              | April             |
| Mei               | 8.356              | May               |
| Juni              | 8.468              | June              |
| Juli              | 8.627              | July              |
| Augustus          | 8.816              | August            |
| September         | 8.897              | September         |
| Oktober           | 8.788              | October           |
| November          | 8.769              | November          |

Bron: Centrale Bank van SurinameSource: Central Bank of Suriname

**Grafiek 7 / Graph 7**





## V SOCIALE INDICATOREN /



## SOCIAL INDICATORS

**Tabel 4.1a: Rechthebbenden van Algemene Oudedags Voorziening naar district, geslacht en  
uitgekeerd bedrag per maand in het 1<sup>e</sup> kwartaal 2017**

*Table 4.1a: Claimants of General Old Age Security by District, Sex and Amount Paid per  
month in the 1<sup>st</sup> Quarter 2017*

| Distrikt /<br>District | Januari / January (SRD 525) |               |                  |                         |
|------------------------|-----------------------------|---------------|------------------|-------------------------|
|                        | Geslacht / Sex              |               | Totaal/<br>Total | Bedrag/ Amount<br>(SRD) |
|                        | M/M                         | V/F           |                  |                         |
| Paramaribo             | 12,667                      | 15,665        | 28,332           | 14,874,300.00           |
| Wanica                 | 4,662                       | 5,227         | 9,889            | 5,191,725.00            |
| Nickerie               | 1,769                       | 2,082         | 3,851            | 2,021,775.00            |
| Coronie                | 180                         | 168           | 348              | 182,700.00              |
| Saramacca              | 793                         | 853           | 1,646            | 864,150.00              |
| Commewijne             | 1,451                       | 1,444         | 2,895            | 1,519,875.00            |
| Marowijne              | 937                         | 1,083         | 2,020            | 1,060,500.00            |
| Para                   | 1,079                       | 961           | 2,040            | 1,071,000.00            |
| Brokopondo             | 320                         | 470           | 790              | 414,750.00              |
| Sipaliwini             | 1,324                       | 2,301         | 3,625            | 1,903,125.00            |
| <b>Totaal / Total</b>  | <b>25,182</b>               | <b>30,254</b> | <b>55,436</b>    | <b>29,103,900.00</b>    |

| Distrikt /<br>District | Februari / February |               |                  |                         |
|------------------------|---------------------|---------------|------------------|-------------------------|
|                        | Geslacht / Sex      |               | Totaal/<br>Total | Bedrag/ Amount<br>(SRD) |
|                        | M/M                 | V/F           |                  |                         |
| Paramaribo             | 12,715              | 15,704        | 28,419           | 14,919,975.00           |
| Wanica                 | 4,692               | 5,249         | 9,941            | 5,219,025.00            |
| Nickerie               | 1,779               | 2,100         | 3,879            | 2,036,475.00            |
| Coronie                | 180                 | 167           | 347              | 182,175.00              |
| Saramacca              | 802                 | 854           | 1,656            | 869,400.00              |
| Commewijne             | 1,463               | 1,446         | 2,909            | 1,527,225.00            |
| Marowijne              | 936                 | 1,091         | 2,027            | 1,064,175.00            |
| Para                   | 1,089               | 962           | 2,051            | 1,076,775.00            |
| Brokopondo             | 320                 | 470           | 790              | 414,750.00              |
| Sipaliwini             | 1,325               | 2,293         | 3,618            | 1,899,450.00            |
| <b>Totaal / Total</b>  | <b>25,301</b>       | <b>30,336</b> | <b>55,637</b>    | <b>29,209,425.00</b>    |

| Distrikt /<br>District | Maart / March  |               |                  |                         |
|------------------------|----------------|---------------|------------------|-------------------------|
|                        | Geslacht / Sex |               | Totaal/<br>Total | Bedrag/ Amount<br>(SRD) |
|                        | M/M            | V/F           |                  |                         |
| Paramaribo             | 12,756         | 15,755        | 28,511           | 14,968,275.00           |
| Wanica                 | 4,720          | 5,268         | 9,988            | 5,243,700.00            |
| Nickerie               | 1,815          | 2,135         | 3,950            | 2,073,750.00            |
| Coronie                | 183            | 170           | 353              | 185,325.00              |
| Saramacca              | 809            | 854           | 1,663            | 873,075.00              |
| Commewijne             | 1,468          | 1,455         | 2,923            | 1,534,575.00            |
| Marowijne              | 939            | 1,097         | 2,036            | 1,068,900.00            |
| Para                   | 1,085          | 968           | 2,053            | 1,077,825.00            |
| Brokopondo             | 319            | 470           | 789              | 414,225.00              |
| Sipaliwini             | 1,324          | 2,290         | 3,614            | 1,897,350.00            |
| <b>Totaal / Total</b>  | <b>25,418</b>  | <b>30,462</b> | <b>55,880</b>    | <b>29,337,000.00</b>    |

**Tabel 4.1b: Rechthebbenden van Algemene Oudedags Voorziening naar district, geslacht en uitgekeerd bedrag per maand in het 2<sup>e</sup> kwartaal 2017**

*Table 4.1b: Claimants of General Old Age Security by District, Sex and Amount Paid per month in the 2<sup>nd</sup> Quarter 2017*

| Distrikt /<br>District | April / April (SRD 525) |               |                  |                         |
|------------------------|-------------------------|---------------|------------------|-------------------------|
|                        | Geslacht / Sex          |               | Totaal/<br>Total | Bedrag/ Amount<br>(SRD) |
|                        | M/M                     | V/F           |                  |                         |
| Paramaribo             | 12,776                  | 15,792        | 28,568           | <b>14,998,200.00</b>    |
| Wanica                 | 4,734                   | 5,293         | 10,027           | <b>5,264,175.00</b>     |
| Nickerie               | 1,820                   | 2,148         | 3,968            | <b>2,083,200.00</b>     |
| Coronie                | 184                     | 170           | 354              | <b>185,850.00</b>       |
| Saramacca              | 811                     | 856           | 1,667            | <b>875,175.00</b>       |
| Commewijne             | 1,473                   | 1,460         | 2,933            | <b>1,539,825.00</b>     |
| Marowijne              | 938                     | 1,098         | 2,036            | <b>1,068,900.00</b>     |
| Para                   | 1,089                   | 969           | 2,058            | <b>1,080,450.00</b>     |
| Brokopondo             | 320                     | 469           | 789              | <b>414,225.00</b>       |
| Sipaliwini             | 1,325                   | 2,289         | 3,614            | <b>1,897,350.00</b>     |
| <b>Totaal / Total</b>  | <b>25,470</b>           | <b>30,544</b> | <b>56,014</b>    | <b>29,407,350.00</b>    |

| Distrikt /<br>District | Mei / May      |               |                  |                         |
|------------------------|----------------|---------------|------------------|-------------------------|
|                        | Geslacht / Sex |               | Totaal/<br>Total | Bedrag/ Amount<br>(SRD) |
|                        | M/M            | V/F           |                  |                         |
| Paramaribo             | 12,843         | 15,860        | 28,703           | <b>15,069,075.00</b>    |
| Wanica                 | 4,759          | 5,322         | 10,081           | <b>5,292,525.00</b>     |
| Nickerie               | 1,836          | 2,166         | 4,002            | <b>2,101,050.00</b>     |
| Coronie                | 181            | 174           | 355              | <b>186,375.00</b>       |
| Saramacca              | 813            | 864           | 1,677            | <b>880,425.00</b>       |
| Commewijne             | 1,487          | 1,468         | 2,955            | <b>1,551,375.00</b>     |
| Marowijne              | 948            | 1,100         | 2,048            | <b>1,075,200.00</b>     |
| Para                   | 1,090          | 975           | 2,065            | <b>1,084,125.00</b>     |
| Brokopondo             | 322            | 469           | 791              | <b>415,275.00</b>       |
| Sipaliwini             | 1,326          | 2,289         | 3,615            | <b>1,897,875.00</b>     |
| <b>Totaal / Total</b>  | <b>25,605</b>  | <b>30,687</b> | <b>56,292</b>    | <b>29,553,300.00</b>    |

| Distrikt /<br>District | Juni / June    |               |                  |                         |
|------------------------|----------------|---------------|------------------|-------------------------|
|                        | Geslacht / Sex |               | Totaal/<br>Total | Bedrag/ Amount<br>(SRD) |
|                        | M/M            | V/F           |                  |                         |
| Paramaribo             | 12,864         | 15,895        | 28,759           | <b>15,098,475.00</b>    |
| Wanica                 | 4,775          | 5,335         | 10,110           | <b>5,307,750.00</b>     |
| Nickerie               | 1,852          | 2,184         | 4,036            | <b>2,118,900.00</b>     |
| Coronie                | 180            | 173           | 353              | <b>185,325.00</b>       |
| Saramacca              | 822            | 863           | 1,685            | <b>884,625.00</b>       |
| Commewijne             | 1,494          | 1,468         | 2,962            | <b>1,555,050.00</b>     |
| Marowijne              | 948            | 1,099         | 2,047            | <b>1,074,675.00</b>     |
| Para                   | 1,089          | 975           | 2,064            | <b>1,083,600.00</b>     |
| Brokopondo             | 321            | 471           | 792              | <b>415,800.00</b>       |
| Sipaliwini             | 1,334          | 2,293         | 3,627            | <b>1,904,175.00</b>     |
| <b>Totaal / Total</b>  | <b>25,679</b>  | <b>30,756</b> | <b>56,435</b>    | <b>29,628,375.00</b>    |

**Tabel 4.1c: Rechthebbenden van Algemene Oudedags Voorziening naar district, geslacht en  
 uitgekeerd bedrag per maand in het 3<sup>e</sup> kwartaal 2017**  
**Table 4.1c: Claimants of General Old Age Security by District, Sex and Amount Paid per  
 month in the 3<sup>rd</sup> Quarter 2017**

| Distrikt /<br>District | Juli / July (SRD 525) |               |                  |                         |
|------------------------|-----------------------|---------------|------------------|-------------------------|
|                        | Geslacht / Sex        |               | Totaal/<br>Total | Bedrag/ Amount<br>(SRD) |
|                        | M/M                   | V/F           |                  |                         |
| Paramaribo             | 12,923                | 15,937        | 28,860           | <b>15,151,500.00</b>    |
| Wanica                 | 4,814                 | 5,368         | 10,182           | <b>5,345,550.00</b>     |
| Nickerie               | 1,878                 | 2,209         | 4,087            | <b>2,145,675.00</b>     |
| Coronie                | 183                   | 172           | 355              | <b>186,375.00</b>       |
| Saramacca              | 823                   | 864           | 1,687            | <b>885,675.00</b>       |
| Commewijne             | 1,508                 | 1,476         | 2,984            | <b>1,566,600.00</b>     |
| Marowijne              | 955                   | 1,102         | 2,057            | <b>1,079,925.00</b>     |
| Para                   | 1,088                 | 978           | 2,066            | <b>1,084,650.00</b>     |
| Brokopondo             | 319                   | 470           | 789              | <b>414,225.00</b>       |
| Sipaliwini             | 1,336                 | 2,292         | 3,628            | <b>1,904,700.00</b>     |
| <b>Totaal / Total</b>  | <b>25,827</b>         | <b>30,868</b> | <b>56,695</b>    | <b>29,764,875.00</b>    |

| Distrikt /<br>District | Augustus / August |               |                  |                         |
|------------------------|-------------------|---------------|------------------|-------------------------|
|                        | Geslacht / Sex    |               | Totaal/<br>Total | Bedrag/ Amount<br>(SRD) |
|                        | M/M               | V/F           |                  |                         |
| Paramaribo             | 12,960            | 15,987        | 28,947           | <b>15,197,175.00</b>    |
| Wanica                 | 4,829             | 5,389         | 10,218           | <b>5,364,450.00</b>     |
| Nickerie               | 1,888             | 2,212         | 4,100            | <b>2,152,500.00</b>     |
| Coronie                | 182               | 171           | 353              | <b>185,325.00</b>       |
| Saramacca              | 828               | 864           | 1,692            | <b>888,300.00</b>       |
| Commewijne             | 1,517             | 1,475         | 2,992            | <b>1,570,800.00</b>     |
| Marowijne              | 959               | 1,103         | 2,062            | <b>1,082,550.00</b>     |
| Para                   | 1,097             | 981           | 2,078            | <b>1,090,950.00</b>     |
| Brokopondo             | 322               | 470           | 792              | <b>415,800.00</b>       |
| Sipaliwini             | 1,338             | 2,296         | 3,634            | <b>1,907,850.00</b>     |
| <b>Totaal / Total</b>  | <b>25,920</b>     | <b>30,948</b> | <b>56,868</b>    | <b>29,855,700.00</b>    |

| Distrikt /<br>District | September / September |     |                  |                         |
|------------------------|-----------------------|-----|------------------|-------------------------|
|                        | Geslacht / Sex        |     | Totaal/<br>Total | Bedrag/ Amount<br>(SRD) |
|                        | M/M                   | V/F |                  |                         |
| Paramaribo             |                       |     |                  |                         |
| Wanica                 |                       |     |                  |                         |
| Nickerie               |                       |     |                  |                         |
| Coronie                |                       |     |                  |                         |
| Saramacca              |                       |     |                  |                         |
| Commewijne             |                       |     |                  |                         |
| Marowijne              |                       |     |                  |                         |
| Para                   |                       |     |                  |                         |
| Brokopondo             |                       |     |                  |                         |
| Sipaliwini             |                       |     |                  |                         |
| <b>Totaal / Total</b>  |                       |     |                  |                         |

**Tabel 4.2a: Uitgekeerd bedrag per district en het aantal rechthebbende mannen en vrouwen per district, 3<sup>e</sup> kwartaal 2016/**

**Table 4.2a: Amount Paid by district and total claimant men and women by district, 3<sup>rd</sup> Quarter 2016**

| District      | Geslacht/Sex |     | Financiële Bijstand Juli / Financial Support July |                      |        |                 |          |                          |
|---------------|--------------|-----|---|----------------------|--------|-----------------|----------|--------------------------|
|               | M/M          | V/F | Bestand   | Fin.Behoeft<br>(SRD) | Totaal | Uitbetaald(SRD) | Verschil | Saldo<br>Bedrag<br>(SRD) |
| Paramaribo    | 28           | 63  | 91  | 3,195.00             | NB/NA  |                 |          |                          |
| Nickerie      | 47           | 131 | 178   | 6,091.50             |        |                 |          |                          |
| Coronie       | 0            | 3   | 3   | 109.5                |        |                 |          |                          |
| Saramacca     | 12           | 41  | 53  | 1,864.50             |        |                 |          |                          |
| Wanica        | 27           | 105 | 132   | 4,603.50             |        |                 |          |                          |
| Para          | 3            | 79  | 82  | 3,093.00             |        |                 |          |                          |
| Commewijne    | 35           | 112 | 147   | 5,161.50             |        |                 |          |                          |
| Marowijne     | 6            | 147 | 153   | 5,539.50             |        |                 |          |                          |
| <b>Totaal</b> | 158          | 681 | 839   | 29,658.00            |        |                 |          |                          |

Bron: Dienst AUSV / min. v. SoZaVo/ Source: Dept AUSV Min SoZaVo  
 Exclusief Brokopondo en Sipaliwini/ Exclusive of Brokopondo and Sipaliwini

| District      | Geslacht/Sex |     | Financiële Bijstand Augustus / Financial Support August |               |        |                 |          |                          |
|---------------|--------------|-----|---|---------------|--------|-----------------|----------|--------------------------|
|               | M/M          | V/F | Bestand   | Fin.Beh.(SRD) | Totaal | Uitbetaald(SRD) | Verschil | Saldo<br>Bedrag<br>(SRD) |
| Paramaribo    | 30           | 71  | 101   | 3,552.00      | NB/NA  |                 |          |                          |
| Nickerie      | 47           | 136 | 183   | 6,271.50      |        |                 |          |                          |
| Coronie       | 0            | 3   | 3   | 109.5         |        |                 |          |                          |
| Saramacca     | 13           | 43  | 56  | 1,968.00      |        |                 |          |                          |
| Wanica        | 23           | 119 | 142   | 4,984.50      |        |                 |          |                          |
| Para          | 5            | 77  | 82  | 3,100.50      |        |                 |          |                          |
| Commewijne    | 31           | 109 | 140   | 4,899.00      |        |                 |          |                          |
| Marowijne     | 8            | 159 | 167   | 6,067.50      |        |                 |          |                          |
| <b>Totaal</b> | 157          | 717 | 874   | 30,952.50     |        |                 |          |                          |

Bron: Dienst AUSV / min. v. SoZaVo/ Source: Dept AUSV Min SoZaVo  
 Exclusief Brokopondo en Sipaliwini/ Exclusive of Brokopondo and Sipaliwini

| District      | Geslacht/Sex |     | Financiële Bijstand September / Financial Support September |               |        |                 |          |                          |
|---------------|--------------|-----|---|---------------|--------|-----------------|----------|--------------------------|
|               | M/M          | V/F | Bestand   | Fin.Beh.(SRD) | Totaal | Uitbetaald(SRD) | Verschil | Saldo<br>Bedrag<br>(SRD) |
| Paramaribo    | 29           | 84  | 113   | 3,973.50      | NB/NA  |                 |          |                          |
| Nickerie      | 45           | 133 | 178   | 6,093.00      |        |                 |          |                          |
| Coronie       | 0            | 3   | 3   | 109.5         |        |                 |          |                          |
| Saramacca     | 12           | 43  | 55  | 1,932.00      |        |                 |          |                          |
| Wanica        | 33           | 127 | 160   | 5,620.50      |        |                 |          |                          |
| Para          | 5            | 68  | 73  | 2,760.00      |        |                 |          |                          |
| Commewijne    | 28           | 99  | 127   | 4,444.50      |        |                 |          |                          |
| Marowijne     | 6            | 152 | 158   | 5,766.00      |        |                 |          |                          |
| <b>Totaal</b> | 158          | 709 | 867   | 30,699.00     |        |                 |          |                          |

Bron: Dienst AUSV / min. v. SoZaVo/ Source: Dept AUSV Min SoZaVo  
 Exclusief Brokopondo en Sipaliwini/ Exclusive of Brokopondo and Sipaliwini

**Tabel 4.2b: Uitgekeerd bedrag per district en het aantal rechthebbende mannen en vrouwen per district, 4<sup>e</sup> kwartaal 2016/**

**Table 4.2b: Amount Paid by district and total claimant men and women by district, 4<sup>th</sup> Quarter 2016**

| Distrikt      | Geslacht/Sex |     | Financiële Bijstand Oktober / Financial Support October |                    |        |                 |          |                    |
|---------------|--------------|-----|---|--------------------|--------|-----------------|----------|--------------------|
|               | M/M          | V/F | Bestand   | Fin.Behoefte (SRD) | Totaal | Uitbetaald(SRD) | Verschil | Saldo Bedrag (SRD) |
| Paramaribo    | 29           | 92  | 121   | 4,257.00           | NB/NA  |                 |          |                    |
| Nickerie      | 44           | 130 | 174   | 5,956.50           |        |                 |          |                    |
| Coronie       | 0            | 3   | 3   | 109.5              |        |                 |          |                    |
| Saramacca     | 11           | 43  | 54  | 1,875.00           |        |                 |          |                    |
| Wanica        | 28           | 112 | 140   | 4,912.50           |        |                 |          |                    |
| Para          | 4            | 57  | 61  | 2,302.50           |        |                 |          |                    |
| Commewijne    | 27           | 101 | 128   | 4,480.50           |        |                 |          |                    |
| Marowijne     | 9            | 128 | 137   | 4,978.50           |        |                 |          |                    |
| <b>Totaal</b> | 152          | 666 | 818   | 28,872.00          |        |                 |          |                    |

Bron: Dienst AUSV / min. v. SoZaVo/ Source: Dept AUSV Min SoZaVo  
 Exclusief Brokopondo en Sipaliwini/ Exclusive of Brokopondo and Sipaliwini

| Distrikt      | Geslacht/Sex |     | Financiële Bijstand November / Financial Support November |               |        |                 |          |                    |
|---------------|--------------|-----|---|---------------|--------|-----------------|----------|--------------------|
|               | M/M          | V/F | Bestand   | Fin.Beh.(SRD) | Totaal | Uitbetaald(SRD) | Verschil | Saldo Bedrag (SRD) |
| Paramaribo    | 28           | 94  | 122   | 4,287.00      | NB/NA  |                 |          |                    |
| Nickerie      | 37           | 125 | 162   | 5,542.50      |        |                 |          |                    |
| Coronie       | 0            | 3   | 3   | 109.5         |        |                 |          |                    |
| Saramacca     | 11           | 41  | 52  | 1,798.50      |        |                 |          |                    |
| Wanica        | 27           | 109 | 136   | 4,761.00      |        |                 |          |                    |
| Para          | 4            | 56  | 60  | 2,278.50      |        |                 |          |                    |
| Commewijne    | 26           | 98  | 124   | 4,351.50      |        |                 |          |                    |
| Marowijne     | 9            | 134 | 143   | 5,176.50      |        |                 |          |                    |
| <b>Totaal</b> | 142          | 660 | 802   | 28,305.00     |        |                 |          |                    |

Bron: Dienst AUSV / min. v. SoZaVo/ Source: Dept AUSV Min SoZaVo  
 Exclusief Brokopondo en Sipaliwini/ Exclusive of Brokopondo and Sipaliwini

| Distrikt      | Geslacht/Sex |     | Financiële Bijstand December / Financial Support December |               |        |                 |          |                    |
|---------------|--------------|-----|---|---------------|--------|-----------------|----------|--------------------|
|               | M/M          | V/F | Bestand   | Fin.Beh.(SRD) | Totaal | Uitbetaald(SRD) | Verschil | Saldo Bedrag (SRD) |
| Paramaribo    | 26           | 98  | 124   | 4,344.00      | NB/NA  |                 |          |                    |
| Nickerie      | 36           | 127 | 163   | 5,577.00      |        |                 |          |                    |
| Coronie       | 0            | 3   | 3   | 109.5         |        |                 |          |                    |
| Saramacca     | 9            | 37  | 46  | 1,585.50      |        |                 |          |                    |
| Wanica        | 26           | 91  | 117   | 4,123.50      |        |                 |          |                    |
| Para          | 3            | 54  | 57  | 2,152.50      |        |                 |          |                    |
| Commewijne    | 22           | 82  | 104   | 3,639.00      |        |                 |          |                    |
| Marowijne     | 8            | 128 | 136   | 4,983.00      |        |                 |          |                    |
| <b>Totaal</b> | 130          | 620 | 750   | 26,514.00     |        |                 |          |                    |

Bron: Dienst AUSV / min. v. SoZaVo/ Source: Dept AUSV Min SoZaVo  
 Exclusief Brokopondo en Sipaliwini/ Exclusive of Brokopondo and Sipaliwini



**Tabel 4.2c: Uitgekeerd bedrag per district en het aantal rechthebbende mannen en vrouwen met een beperking per district, 3<sup>e</sup> kwartaal 2016/**

**Table 4.2c: Amount Paid by district and total claimant men and women with a disability by district, 3<sup>rd</sup> Quarter 2016**

| Distrikt      | Geslacht/Sex |              | Financiële Bijstand Juli / Financial Support July |                     |        |                 |          |                    |
|---------------|--------------|--------------|---|---------------------|--------|-----------------|----------|--------------------|
|               | M/M          | V/F          | Bestand   | Fin.Beh.(SRD)       | Totaal | Uitbetaald(SRD) | Verschil | Saldo Bedrag (SRD) |
| Paramaribo    | 2,622        | 2,840        | 5,462   | 1,882,559.50        | NB/NA  |                 |          |                    |
| Nickerie      | 316          | 207          | 523   | 174,231.00          |        |                 |          |                    |
| Coronie       | 41           | 32           | 73  | 24,485.00           |        |                 |          |                    |
| Saramacca     | 173          | 205          | 378   | 128,407.50          |        |                 |          |                    |
| Wanica        | 1,539        | 2,081        | 3,620   | 1,289,552.50        |        |                 |          |                    |
| Para          | 281          | 646          | 927   | 340,430.00          |        |                 |          |                    |
| Commewijne    | 487          | 645          | 1,132   | 385,505.00          |        |                 |          |                    |
| Marowijne     | 231          | 404          | 635   | 223,017.00          |        |                 |          |                    |
| <b>Totaal</b> | <b>5,690</b> | <b>7,060</b> | <b>12,750</b>                                     | <b>4,448,187.50</b> |        |                 |          |                    |

Bron: Dienst AUSV / min. v. SoZaVo/ Source: Dept AUSV Min SoZaVo  
 Exclusief Brokopondo en Sipaliwini/ Exclusive of Brokopondo and Sipaliwini

| Distrikt      | Geslacht/Sex |              | Financiële Bijstand Augustus / Financial Support August |                     |        |                 |          |                    |
|---------------|--------------|--------------|---|---------------------|--------|-----------------|----------|--------------------|
|               | M/M          | V/F          | Bestand   | Fin.Beh.(SRD)       | Totaal | Uitbetaald(SRD) | Verschil | Saldo Bedrag (SRD) |
| Paramaribo    | 2,590        | 2,813        | 5,403   | 1,860,723.00        | NB/NA  |                 |          |                    |
| Nickerie      | 327          | 208          | 535   | 178,275.00          |        |                 |          |                    |
| Coronie       | 41           | 33           | 74  | 24,843.00           |        |                 |          |                    |
| Saramacca     | 173          | 199          | 372   | 125,773.00          |        |                 |          |                    |
| Wanica        | 1,557        | 2,122        | 3,679   | 1,310,658.50        |        |                 |          |                    |
| Para          | 280          | 650          | 930   | 341,445.50          |        |                 |          |                    |
| Commewijne    | 474          | 628          | 1,102   | 374,132.00          |        |                 |          |                    |
| Marowijne     | 231          | 393          | 624   | 218,955.00          |        |                 |          |                    |
| <b>Totaal</b> | <b>5,673</b> | <b>7,046</b> | <b>12,719</b>   | <b>4,434,805.00</b> |        |                 |          |                    |

Bron: Dienst AUSV / min. v. SoZaVo/ Source: Dept AUSV Min SoZaVo  
 Exclusief Brokopondo en Sipaliwini/ Exclusive of Brokopondo and Sipaliwini

| Distrikt      | Geslacht/Sex |              | Financiële Bijstand September / Financial Support September |                     |        |                 |          |                    |
|---------------|--------------|--------------|---|---------------------|--------|-----------------|----------|--------------------|
|               | M/M          | V/F          | Bestand   | Fin.Beh.(SRD)       | Totaal | Uitbetaald(SRD) | Verschil | Saldo Bedrag (SRD) |
| Paramaribo    | 2,570        | 2,779        | 5,349   | 1,839,756.00        | NB/NA  |                 |          |                    |
| Nickerie      | 328          | 209          | 537   | 178,998.50          |        |                 |          |                    |
| Coronie       | 41           | 33           | 74  | 24,843.00           |        |                 |          |                    |
| Saramacca     | 165          | 192          | 357   | 120,707.50          |        |                 |          |                    |
| Wanica        | 1,557        | 2,116        | 3,673   | 1,308,865.00        |        |                 |          |                    |
| Para          | 265          | 649          | 914   | 336,885.00          |        |                 |          |                    |
| Commewijne    | 459          | 599          | 1,058   | 358,531.00          |        |                 |          |                    |
| Marowijne     | 230          | 386          | 616   | 215,521.50          |        |                 |          |                    |
| <b>Totaal</b> | <b>5,615</b> | <b>6,963</b> | <b>12,578</b>   | <b>4,384,107.50</b> |        |                 |          |                    |

Bron: Dienst AUSV / min. v. SoZaVo/ Source: Dept AUSV Min SoZaVo  
 Exclusief Brokopondo en Sipaliwini/ Exclusive of Brokopondo and Sipaliwini

**Tabel 4.2d: Uitgekeerd bedrag per district en het aantal rechthebbende mannen en vrouwen met een beperking per district, 4<sup>e</sup> kwartaal 2016/**

**Table 4.2d: Amount Paid by district and total claimant men and women with a disability by district, 4<sup>th</sup> Quarter 2016**

| District      | Geslacht/Sex |              | Financiële Bijstand Oktober / Financial Support October |                     |        |                 |          |                    |
|---------------|--------------|--------------|---|---------------------|--------|-----------------|----------|--------------------|
|               | M/M          | V/F          | Bestand   | Fin.Beh.(SRD)       | Totaal | Uitbetaald(SRD) | Verschil | Saldo Bedrag (SRD) |
| Paramaribo    | 2,533        | 2,780        | 5,313   | 1,824,762.00        | NB/NA  |                 |          |                    |
| Nickerie      | 330          | 208          | 538   | 179,290.50          |        |                 |          |                    |
| Coronie       | 40           | 33           | 73  | 24,518.00           |        |                 |          |                    |
| Saramacca     | 168          | 190          | 358   | 121,035.50          |        |                 |          |                    |
| Wanica        | 1,554        | 2,118        | 3,672   | 1,311,589.00        |        |                 |          |                    |
| Para          | 266          | 647          | 913   | 336,031.50          |        |                 |          |                    |
| Commewijne    | 443          | 551          | 994   | 335,247.50          |        |                 |          |                    |
| Marowijne     | 226          | 370          | 596   | 208,251.00          |        |                 |          |                    |
| <b>Totaal</b> | <b>5,560</b> | <b>6,897</b> | <b>12,457</b>   | <b>4,340,725.00</b> |        |                 |          |                    |

Bron: Dienst AUSV / min. v. SoZaVo/ Source: Dept AUSV Min SoZaVo  
 Exclusief Brokopondo en Sipaliwini/ Exclusive of Brokopondo and Sipaliwini

| District      | Geslacht/Sex |              | Financiële Bijstand November / Financial Support November |                     |        |                 |          |                    |
|---------------|--------------|--------------|---|---------------------|--------|-----------------|----------|--------------------|
|               | M/M          | V/F          | Bestand   | Fin.Beh.(SRD)       | Totaal | Uitbetaald(SRD) | Verschil | Saldo Bedrag (SRD) |
| Paramaribo    | 2,527        | 2,772        | 5,299   | 1,817,518.00        | NB/NA  |                 |          |                    |
| Nickerie      | 326          | 209          | 535   | 178,279.50          |        |                 |          |                    |
| Coronie       | 40           | 33           | 73  | 24,518.00           |        |                 |          |                    |
| Saramacca     | 167          | 194          | 361   | 121,938.50          |        |                 |          |                    |
| Wanica        | 1,549        | 2,144        | 3,693   | 1,320,049.00        |        |                 |          |                    |
| Para          | 265          | 667          | 932   | 342,279.00          |        |                 |          |                    |
| Commewijne    | 422          | 521          | 943   | 316,647.00          |        |                 |          |                    |
| Marowijne     | 227          | 377          | 604   | 212,549.50          |        |                 |          |                    |
| <b>Totaal</b> | <b>5,523</b> | <b>6,917</b> | <b>12,440</b>   | <b>4,333,778.50</b> |        |                 |          |                    |

Bron: Dienst AUSV / min. v. SoZaVo/ Source: Dept AUSV Min SoZaVo  
 Exclusief Brokopondo en Sipaliwini/ Exclusive of Brokopondo and Sipaliwini

| District      | Geslacht/Sex |              | Financiële Bijstand December / Financial Support December |                     |        |                 |          |                    |
|---------------|--------------|--------------|---|---------------------|--------|-----------------|----------|--------------------|
|               | M/M          | V/F          | Bestand   | Fin.Beh.(SRD)       | Totaal | Uitbetaald(SRD) | Verschil | Saldo Bedrag (SRD) |
| Paramaribo    | 2,543        | 2,766        | 5,309   | 1,819,966.00        | NB/NA  |                 |          |                    |
| Nickerie      | 329          | 208          | 537   | 178,893.50          |        |                 |          |                    |
| Coronie       | 40           | 32           | 72  | 24,191.50           |        |                 |          |                    |
| Saramacca     | 173          | 206          | 379   | 127,755.50          |        |                 |          |                    |
| Wanica        | 1,549        | 2,148        | 3,697   | 132,135.50          |        |                 |          |                    |
| Para          | 263          | 681          | 944   | 347,371.50          |        |                 |          |                    |
| Commewijne    | 420          | 523          | 943   | 316,808.50          |        |                 |          |                    |
| Marowijne     | 232          | 392          | 624   | 219,622.00          |        |                 |          |                    |
| <b>Totaal</b> | <b>5,549</b> | <b>6,956</b> | <b>12,505</b>   | <b>3,166,744.00</b> |        |                 |          |                    |

Bron: Dienst AUSV / min. v. SoZaVo/ Source: Dept AUSV Min SoZaVo  
 Exclusief Brokopondo en Sipaliwini/ Exclusive of Brokopondo and Sipaliwini